

SWYXDECT 800 INSTALLATION AND CONFIGURATION

As of: June 2024

Legal information

© 6/24 Enreach GmbH. All rights reserved.

Trademarks: Swyx, SwyxIt! Classic and SwyxON are registered trademarks of Enreach GmbH.

All other trademarks, product names, company names, trademarks and service marks are the property of their respective owners.

The contents of this documentation are protected by copyright. Publication in the World Wide Web or in other services of the Internet does not constitute a declaration of consent for other use by third parties. Any use not permitted under German copyright law requires the prior written consent of Enreach GmbH.

The information in this documentation has been carefully checked for correctness, but may contain errors due to constant updating and changes.

Enreach GmbH assumes no responsibility for printing and writing errors.

Despite careful control of the content, Enreach GmbH accepts no liability for the content of external links and does not adopt it as its own. The operators of the linked sites are solely responsible for the content of their sites.

Enreach GmbH

Emil-Figge-Str. 86

D-44227 Dortmund

office@enreach.de

www.enreach.de/en

CONTENTS

SwyxDECT 800 System	5
1.1 Deployment modes of DECT systems.....	5
1.2 System overview.....	5
1.2.1 Master base station	6
1.2.2 Slave base station.....	6
1.2.3 Radio synchronisation	6
1.2.4 Examples of installations	7
1.3 Installation	8
1.4 General Information for the SwyxDECT 800 System.....	8
1.5 Starting the SwyxDECT 800.....	9
1.6 Configuration of the SwyxDECT 800.....	10
1.6.1 Configuration of two base stations as "Mirror"	11
1.6.2 Configuration of the master base station (standby scenarios 2 or 3).....	13
1.6.3 Configuration of the standby master base station (standby scenario 3).....	15
1.6.4 Configuration of a slave base station	15
1.6.5 Configuration in detail	16
1.6.5.1 General	16
1.6.5.2 LAN	17
1.6.5.3 LDAP.....	19
1.6.5.4 DECT	20
1.6.5.5 Import Central Phonebook or export as CSV file.....	23
1.6.5.6 LDAP query	23
1.6.5.7 Users	24
1.6.5.8 Device Overview	24
1.6.5.9 DECT Sync	25
1.6.5.10Traffic.....	25
1.6.5.11Backup.....	26
1.6.5.12Update	26
1.6.5.13Diagnostics.....	26
1.6.5.14Reset	28
1.7 Configure DECT handset user	29
1.7.1 Configuration in SwyxWare.....	29
1.7.2 Configurations within the SwyxDECT 800 system	29
1.8 Portable Device Manager (PDM).....	33
1.8.1 Installation.....	33
1.8.2 Configuration of the Portable Device Manager.....	34
1.8.2.1 Optional COM port settings.....	34
1.8.2.2 Definition files	34
1.8.2.3 Menu language of the Portable Device Manager	34
1.8.3 The PDM user interface	35
1.8.4 Tabs	35
1.8.4.1 "Devices" tab	35
1.8.4.2 "Numbers" Tab	36
1.8.4.3 "Templates" Tab	36
1.8.4.4 "Licenses" Tab.....	36
1.8.5 The New Device Wizard	36
1.8.6 Use the wizard to create a new number	37
1.8.7 Site Management.....	37
1.8.7.1 Site Handling.....	37
1.8.8 Numbers	38
1.8.9 Devices	40
1.8.9.1 Add devices to a site	40
1.8.10 Templates	41
1.8.11 File management	42
1.8.11.1Definition of the file version - parameter version	42
1.8.11.2Import of parameter definition files.....	43
1.8.11.3Import of new device software.....	43
1.8.11.4Import of language files for the devices.....	43
1.8.11.5Import of phonebook files	43
1.8.11.6Upload of a language file to the device	43
1.8.11.7Upload of a company phonebook	44

1.8.11.8 Upgrade a device with new software.....	44
1.8.11.9 Delete imported files	44
1.8.12 Import and export of numbers and templates.....	45
1.8.12.1 Import of numbers	45
1.8.12.2 Import of templates	45
1.8.12.3 Export numbers to a file.....	45
1.8.12.4 Export of templates.....	46
1.8.13 Administration.....	46
1.8.14 Uninstall the Portable Device Manager	46
1.9 Cordless Phone Manager	46
1.9.1 Installation.....	47
1.9.2 Configuration	47
1.9.2.1 Settings.....	48
1.9.2.2 Company phone book.....	48
1.9.2.3 User phone book.....	49
1.9.2.4 Ringing melodies	49
1.9.2.5 Start-up screen	50
1.9.2.6 PBX Settings	50
1.9.2.7 Additional Language.....	51
1.9.2.8 Configure SwyxPhone D300.....	51
1.9.2.9 Software download	52
1.10 Update of the SwyxDECT 800.....	53

1 SWYXDECT 800 SYSTEM

Operation of a system with SwyxWare

This documentation describes the SwyxDECT 800 System.

A SwyxDECT 800 base station supports the following functions:

- LAN connection to the Server
- Up to eight simultaneous phone calls per base station.
- Roaming and call transfers to other SwyxDECT 800 base stations possible
- Configuration via web interface
- DECT GAP/CAP radio interface
- Air synchronization between several base stations
- Power over Ethernet (PoE 802.3af) or local power supply
- LED Status Display

1.1 DEPLOYMENT MODES OF DECT SYSTEMS

There are two different variants for the provision and activation of DECT 800 systems:

Provisioning in Swyx Control Center via DCF for DECT

(Available as of SwyxWare/NetPhone 13.00)

This variant is simpler, takes less time and additionally provides the following DCF for DECT functionality:

- Access to the global Phonebook
- Easy switching of the CTI+ mode
- Call pick-up
- Synchronization with SwyxWare user account:

- Call journal
- Speed dial buttons



If you use or want to use your DECT system in combination with "Unite", you must configure the DECT system conventionally and dispense with the DCF-based functions.



The following functions are currently not available within the DCF deployment, but can subsequently be configured manually via the base station's administration web interface:

- Provisioning of IP DECT gateways,
- Establishment of more than one sych region,
- Connection of base stations from other subnets

See help.enreach.com/controlcenter/3.00/web/Swyx/en-US/index.html#page/help/chap_deskphones.14.11.html#

Conventional configuration (without DCF) of all individual DECT components

You must choose this variant if you absolutely want to use the following functions:

- Mirror function support,
- A hybrid scenario with extensions or "Unite" functionality enabled.

See *1.6 Configuration of the SwyxDECT 800*, page 10

1.2 SYSTEM OVERVIEW

The operating system of each SwyxDECT 800 base station contains the software components master or slave base. The Master software component is only active in the base station of the DECT system.

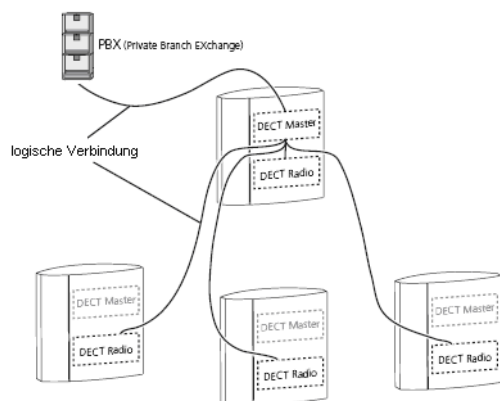


Abb. 1-1: System overview

All base stations are connected via LAN but only the DECT master has a logic connection to the telephony system.

All base stations on the system are DECT radios. They are the software interface between DECT and VoIP signalling and communicate via SIP protocol only with the DECT master.

1.2.1 MASTER BASE STATION

The master is the interface between SwyxDECT 800 base station and SwyxServer. The master manages the handsets integrated in the system. In a database he stores the data on configured and logged on handsets as well as the information on the base station the handset is currently connected to. It is the base station which has received the last message about the registration at a location from the handset. Via this location information calls from/to a handset are forwarded by the master to the corresponding base station. This minimizes the communication load in the overall system.

1.2.2 SLAVE BASE STATION

The slave base station (DECT radio) is a software interface between DECT and IP network. A DECT radio communicates with one master

base station at a time. The database required for the management of the handsets is synchronized with the master database.

1.2.3 RADIO SYNCHRONISATION

DECT base stations use the DECT radio interface to synchronize. This ensures compliance with the CAP standard and optimum use of the radio channels.

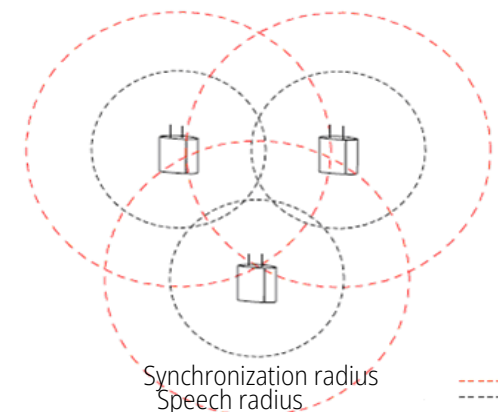


Abb. 1-2: Radio synchronization

One base station of the system is defined as synchronization (synch) master. It is recommended to install synch master and DECT master on one station. This means that based on this base station, all other base stations match the internal crystal oscillator to operate at the same frequency and drift. It does not mean, on the other hand, that all base stations must be in direct radio contact with the DECT master. A base station that is running in so-called slave mode can align itself with another base station, which is also running in slave mode.

- Synchronization radius: The synchronization radius is the area around a base station in which other base stations can synchronize themselves.
- Speech radius: The speech radius is the area around a base station in which a voice transmission to handsets is possible.



Several base stations are configured as air synch candidates. According to the signal strength, the PARI master decides, which base station is the current Air Synch Master. If the current master fails, another one will be selected.

1.2.4 EXAMPLES OF INSTALLATIONS

The SwyxDECT 800 system can have several base stations at one location and also base stations at different locations, which overlap only partially or not at all.

Installation at one location

The example scenario shows an installation of several base stations at one location. The lines between SwyxServer, DECT master and the DECT radios represent the logical link between the software components.

One of the base stations must be assigned the role of master base station. For this purpose, it must have activated the software component DECT Master. It can also continue to act as a DECT radio. Both software components, DECT Master and DECT Radio, must then be activated. For all other base stations, only the software component DECT Radio should be activated.

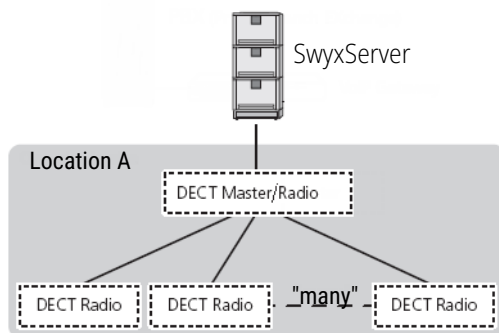


Abb. 1-3: Installation at one location



A SwyxDECT 800 system uses 12 time slots/channels. 4 of them are used for internal applications, 8 remain for calls.

It is recommended to install both components on one station:

- DECT Master (*A base station can work in various states (mode);*, page 21),
- Synchronization master (*'DECT | Air Sync' page*, page 22) .

Similarly, the backup synch master should also be installed on a standby master station.

Installation at multiple locations

The scenario shows the installation of one or more SwyxDECT 800 base stations at different locations. SwyxServer and the DECT master are placed centrally.

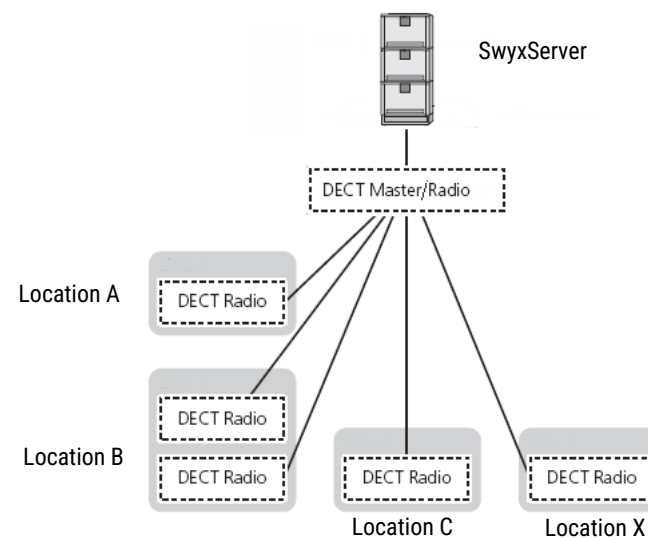


Abb. 1-4: Installation at multiple locations

Air synch areas are used to connect different locations. A synch area is allocated to each location, and has to be entered into the air synch master and into the according slaves.

The handsets SwyxPhone D843, and SwyxPhone D863 can be used in the different locations, where they can answer incoming calls and/or make outgoing calls (roaming). It is also possible to transfer an active call to another DECT radio base station, provided the range of the base stations overlaps (handover) (1.2.3 *Radio synchronisation*, page 6).

1.3 INSTALLATION

A SwyxDECT 800 base station can be attached horizontally as well as vertically.

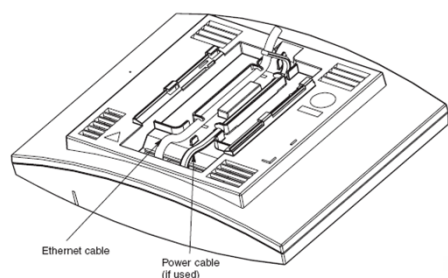


Abb. 1-5: Installation

- Hold the holder with the flat side against the wall, so that the text "TOP" is upwards, and mark the two holes on the wall. The minimum distance between the upper hole and the ceiling or another object above the base station must be 65 mm. If this distance is less than 65 mm, the base station cannot slide into the holder.

- Use of wall plugs: Make two holes with a 6mm drill bit, and insert the wall plug.
- Position the holder with the flat side to the wall, and fix it in place with the two supplied 0.14 in screws.
- Place the base station on the holder and push it downwards, until it clicks into place.

1.4 GENERAL INFORMATION FOR THE SWYXDECT 800 SYSTEM

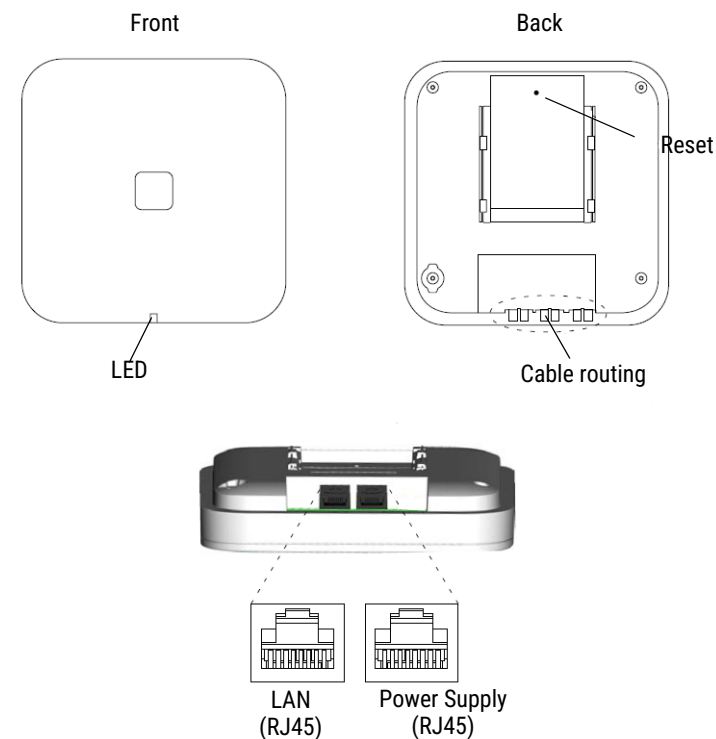


Abb. 1-6: SwyxDECT 800 System

A SwyxDECT 800 base station has two internal antennas; one horizontal and one vertical (antenna diversity to improve signalling).

Contents of the delivery

- Base station with integrated antenna
- One holder:
- Two screws with wall plugs

Power Supply

The SwyxDECT 800 base station can be supplied with power as follows:

- Power over Ethernet (PoE), IEEE 802.3af
The SwyxDECT 800 base station can be supplied with PoE. It uses PoE Class 2 with a power draw of 7W. (IEEE-Standard 802.3, DTE Power over MDI)
- Local plug-in power supply (available as an accessory)

Software

The software for a base station can be updated by download. The download can be carried out during active operation (*1.6.5.12 Update*, page 26).

Plug connections

The following plug connections are available:

- Two 8-pin RJ45 jacks (one for LAN/PoE, one for the external power supply)

State signaling by LEDs

The SwyxDECT 800 has a RGB LED, which indicates the states of the system.

LED Signal	Meaning
blue	SwyxDECT 800 Base station in operation, but no voice traffic

LED Signal	Meaning
100 ms blue, 100 ms off	The SwyxDECT 800 base station is in its start-up phase, e. g. waits for PARI master parameters or searches for air synchronization
400 ms off, 2000 ms blue	SwyxDECT 800 base station in operation, with voice traffic
400 ms red, 2000 ms	Fully utilized with voice traffic
400 ms blue, 600 ms off	Firmware download in progress
100 ms yellow, 100 ms off	The SwyxDECT 800 base station is in mini firmware mode
yellow	TFTP mode
100 ms red, 100 ms off	No Ethernet connection
Red	Fatal hardware error
2000 ms blue, 400 ms yellow	The SwyxDECT 800 base station is in deployment mode and has a good air synchronization
400 ms blue, 600 ms off, 400 ms yellow, 600 ms off, 400 ms yellow	The SwyxDECT 800 base station is in deployment mode and does not have a sufficient air synchronization
2000 ms red, 400 ms yellow	The SwyxDECT 800 base station is in deployment mode and does not have any air synchronization

1.5 STARTING THE SWYXDECT 800

You can access the graphic web interface of the SwyxDECT 800 with the web browser. The SwyxDECT 800 is preset for the use of a DHCP server. When first switched on, it automatically obtains an IP address of a DHCP server. If no server is available, a preset IP address is used.

SwyxDECT 800 in a network without DHCP

The base station is set to the address 192.168.0.1 and the network mask 255.255.255.0.

- Enter the address `http://192.168.0.1` in the web browser.
- Change the automatically preset IP address to the one you want.

SwyxDECT 800 in a network with DHCP

- Make a note of the MAC address, which is given on the back of the base station.

- In the command line enter:

```
C:\nbtstat -R
```

```
C:\nbtstat -a ipbs-xx-xx-xx
```

(For xx-xx-xx, use the last 6 digits of the MAC address).

The IP address is displayed in the list under "Name".

- Enter `http://xxx.xxx.xxx.xxx` (where xxx.xxx.xxx.xxx is the IP address as found) in the address field of the web browser.

It is also possible to enter the following address in the web browser: `http://ipbs-xx-xx-xx` or for the models "PIBS2" `http://ipbs2-xx-xx-xx` (the last digits of the MAC address should then be used for xx-xx-xx).

You will obtain the homepage of the SwyxDECT 800 web interface. You can configure the SwyxDECT 800 here.

You must log on for configuration. Use the following data to do this.

User name: admin

Standard password: changeme



Please note that the IP address cannot be displayed when using 'nbtstat', if the NetBIOS environment is configured for exclusive name resolution via WINS.

1.6 CONFIGURATION OF THE SWYXDECT 800

A SwyxDECT 800 must be configured so that it can be reached by Swyx-Server. Once this has taken place you can log the DECT handsets on to SwyxDECT 800 and telephone via the SwyxServer.

You can configure the SwyxDECT 800 base stations via the web interface.

Requirements

The following requirements must be satisfied before you begin the configuration:

- A 10/100base-T/100base-T Ethernet connection must be available.
- The web browser should support the following functions:
 - HTTP 1.1 protocol
 - HTML 4.0 protocol
 - XML/XSL Version 1.0

Standby scenarios

Base stations can be set up in following modes for different standby scenarios.

Scenario N°	DECT Master	DECT Standby	DECT Radios
1 (recommended)	Mirror (Master1)	Mirror (Master2)	Slave
2	Master	-	Slave
3	Master	Standby	Slave

The following order is recommended for the configuration of the base stations in the IP DECT system:

Standby scenario 1 (recommended)

- 1 Configuration of two base stations as "Mirror" (*1.6.1 Configuration of*

two base stations as "Mirror", page 11).

2. Configuration of slave base stations (*1.6.4 Configuration of a slave base station, page 15*).

Standby scenario 2 or 3

- 1 Configuration of the master SwyxDECT 800 (*1.6.2 Configuration of the master base station (standby scenarios 2 or 3), page 13*).
2. (optional) Configuration of the standby master SwyxDECT 800 (*1.6.3 Configuration of the standby master base station (standby scenario 3), page 15*).
3. Configuration of slave base stations (*1.6.4 Configuration of a slave base station, page 15*).

1.6.1 CONFIGURATION OF TWO BASE STATIONS AS "MIRROR"

This chapter describes the configuration of two equal master base stations in mode "Mirror".

The IP Address of the second base station must be entered during the configuration of the first base station. During the configuration of the second base station please enter the IP Address of the first base station.

When you have finished with the configuration of the base stations, one of them must be set active. If required you can switch between the base stations during an ongoing operation.



It is recommended that the components DECT Master and radio synchronization are installed on the same station.

Configuration of two base stations as "Mirror" ()

- 1 Define the IP address of the both base stations and gain access to SwyxDECT 800 via the web interface (*1.5 Starting the SwyxDECT 800, page 9*).
- 2 Mains power supply for the base station

Open the page "General | Admin".

- In the field "Device name", enter the name (e.g. Warehouse, Purchasing) of the base station.
- Now enter the new user name in the field "User name", and the password in the field "Password". Repeat the input of the password in the text field below.
Standard user name: admin
Standard password: changeme
- Click on "OK".

3 Time server

Open the page "General | NTP".

- Select the "Management | Time settings" option, and enter the IP address of your Windows server or a public time server (e.g. ptbtime1.ptb.de) in the field "Time Server".
- In the field "Interval", define the time period after which the internal time is compared again with that of the time server; and select the relevant time zone in the selection field "Timezone".

See *'General | NTP' page, page 16*.

4 Static IP address

Open the page "LAN | DHCP".

- In the field "mode", choose "disabled".
- Click on "OK".

Open the page "LAN | IP".

- In the fields: "IP address", "Network mask", "Default Gateway" and "DNS Server", enter the data you have obtained from your administrator.
- Click on "OK".

See *This is how you define the static IP address, page 18*.

5 Set the mode to "Mirror".

- Open the page "DECT | Master".
- In the field "mode", choose "Mirror".
See also *A base station can work in various states (mode);, page 21*.
- Click on "OK".

6 Restart the system under "Reset | Reset" (*1.6.5.14 Reset, page 28*).

7 IP Address of another master base station

- Open the page "DECT | Master" and enter in the field "Mirror Master" the IP Address of the second master base station.
 - Click on "OK".
- 8** Restart the system under "Reset | Reset" (*1.6.5.14 Reset*, page 28).
- 9** System properties such as name and password, frequency band and tones, Codecs and packet sizes
Open the page "DECT | System".
- Username and Password
Enter a name in the field "System Name".
Enter your new password in the "New Password" field and repeat your entry in the "Retype Password" field.
See *'DECT | System' page*, page 20.
 - Tones
Select the tone you want in the field "Tones" (e.g. EUROPE-PBX).
See *Signaling tones*, page 20.
 - Frequency band
Select the frequency band you want in the field "Frequency" (e.g. Europe).
See *Frequency band*, page 20.
 - Codecs and Profiles
Select "G711u" in the field "Coder" and enter "20" in the field "Frame (ms)".
See *Codecs and the packet size*, page 21.
 - Click on "OK".
- 10** Restart the system under "Reset | Reset" (*1.6.5.14 Reset*, page 28).
- 11** Configuring SwyxServer
Open the page "DECT | Master".
- Activate the option "Enable Pari function".
 - Select the protocol "SIP" in the selection list.
 - Enter the IP address of SwyxServer under IP PBX in the field "Proxy".
See *IP PBX (Configuration of SwyxServer)*, page 22.
 - Set the maximum length of the internal numbers. This length defines whether the call is an internal or external call, and the respective ringing tones are used (Standard 3).
 - Activate the option "Enbloc Dialing" to enable block dialing.
- In the selection list "Hold signaling", select the option "sendonly".
The corresponding SIP HOLD INVITE message is then filled with this.
- 12** Restart the system under "Reset | Reset" (*1.6.5.14 Reset*, page 28).
- 13** Voicemail notification (Message Waiting Indication)
Open the page "DECT | Suppl". Serv".
- Activate the option "Enable Supplementary Services".
 - In the "MWI Mode" field, select the option "Fixed interrogate and fixed notify number".
 - In the fields "MWI Interrogate Number" and "MWI Notify Number", enter the string "##10".
 - Click on "OK".
- 14** Set the master IP address.
The IP address of the master base station must be known to all base stations.
Open the page "DECT | Radio".
- Enter the name, the password and the address of the master base station into the field "Pari Master IP Address".
The IP address of the standby master base station can additionally be entered.
 - Click on "OK".
See *'DECT | Radio' page*, page 22.
- 15** Restart the system under "Reset | Reset" (*1.6.5.14 Reset*, page 28).
- 16** SARI
Open the page "DECT | SARI" and enter the SARI you have received upon delivery.
See *'DECT | SARI' page (Secondary Access Right Identity)*, page 22.
- 17** Radio Synchronization
Open the page "DECT | Air Sync".
- In the field "mode", choose "Master".
 - Click on "OK".
See *'DECT | Air Sync' page*, page 22.
- 18** VoIP Configuration
Open the page "VoIP | SIP".

Check whether the option "Add instance id to the user registration with the IP-PBX" is deactivated and delete the "Session Timer".

19 Start SwyxDECT 800 again, so that the effect of the configuration changes can be seen (*1.6.5.14 Reset*, page 28).

20 Repeat the steps 2-18 to configure the second base station.

21 Activating the base station

- Open the page "DECT | Master" on one of the two master base stations and click on "Activate mirror".
- Click on "OK".
"Mirror Status: Active" - the selected master base station is set active.

To activate the other master base station, open the page "DECT | Master" on the master base station that is not active and click on the link "Switch master".

1.6.2 CONFIGURATION OF THE MASTER BASE STATION (STANDBY SCENARIOS 2 OR 3)

This chapter describes how to configure the master SwyxDECT 800.

This is how you configure the master SwyxDECT 800

1 Define the address of the SwyxDECT 800 and gain access to SwyxDECT 800 via the web interface (*1.5 Starting the SwyxDECT 800*, page 9).

2 Mains power supply for the base station

Open the page "General | Admin".

- In the field "Device name", enter the name (e.g. Warehouse, Purchasing) of the base station.
- Now enter the new user name in the field "User name", and the password in the field "Password". Repeat the input of the password in the text field below.
Standard user name: admin
Standard password: changeme
- Click on "OK".

3 Time server

Open the page "General | NTP".

- Select the "Management | Time settings" option, and enter the IP address of your Windows server or a public time server (e.g. ptbtime1.ptb.de) in the field "Time Server".
- In the field "Interval", define the time period after which the internal time is compared again with that of the time server; and select the relevant time zone in the selection field "Timezone".

See '*General | NTP*' page, page 16.

4 Static IP address

Open the page "LAN | DHCP".

- In the field "mode", choose "disabled".
- Click on "OK".

Open the page "LAN | IP".

- In the fields: "IP address", "Network mask", "Default Gateway" and "DNS Server", enter the data you have obtained from your administrator.
- Click on "OK".

See *This is how you define the static IP address*, page 18.

5 Set mode to "Master"

Open the page "DECT | Master".

- In the selection list "Mode", select the option "Active".
See *A base station can work in various states (mode):*, page 21.
- Click on "OK".

6 Restart the system under "Reset | Reset" (*1.6.5.14 Reset*, page 28).

7 System properties such as name and password, frequency band and tones, Codexs and packet sizes

Open the page "DECT | System".

• Username and Password

Enter a name in the field "System Name".

Enter your new password in the "New Password" field and repeat your entry in the "Retype Password" field.

See '*DECT | System*' page, page 20.

• Tones

Select the tone you want in the field "Tones" (e.g. EUROPE-PBX).

See *Signaling tones*, page 20.

• Frequency band

Select the frequency band you want in the field "Frequency" (e.g. Europe).

See *Frequency band*, page 20.

- Local interpretation of the R key

Enable the local interpretation of the R-key for terminals by selecting the checkbox at "Local R-Key Handling".

- Disable ICE support

Select the checkbox at "Disable ICE" to disable the Interactive Connectivity Establishment (ICE) protocol. It is recommended to disable ICE to avoid compatibility issues.

- Codecs and Profiles

Select "G711u" in the field "Coder" and enter "20" in the field "Frame (ms)".

See *Codecs and the packet size*, page 21.

- Click on "OK".

8 Restart the system under "Reset | Reset" (*1.6.5.14 Reset*, page 28).

9 Configuring SwyxServer

Open the page "DECT | Master".

- Activate the option "Enable Pari function".
- Select the protocol "SIP" in the selection list.
- Enter the IP address of SwyxServer under IP PBX in the field "Proxy".

See *IP PBX (Configuration of SwyxServer)*, page 22.

- Set the maximum length of the internal numbers. This length defines whether the call is an internal or external call, and the respective ringing tones are used (Standard 3).
- Activate the option "Enbloc Dialing" to enable block dialing.
- In the selection list "Hold signaling", select the option "sendonly". The corresponding SIP HOLD INVITE message is then filled with this.

10 Restart the system under "Reset | Reset" (*1.6.5.14 Reset*, page 28).

11 Voicemail notification (Message Waiting Indication)

Open the page "DECT | Suppl. Serv.".

- Activate the option "Enable Supplementary Services".
- In the "MWI Mode" field, select the option "Fixed interrogate and fixed notify number".

- In the fields "MWI Interrogate Number" and "MWI Notify Number", enter the string "##10".

- Click on "OK".

12 Set the master IP address.

The IP address of the master base station must be known to all base stations.

Open the page "DECT | Radio".

- Enter the name, the password and the address of the master base station into the field "Pari Master IP Address".

The IP address of the standby master base station can additionally be entered.

- Click on "OK".

See *'DECT | Radio' page*, page 22.

13 Restart the system under "Reset | Reset" (*1.6.5.14 Reset*, page 28).

14 SARI

Open the page "DECT | SARI" and enter the SARI you have received upon delivery.

See *'DECT | SARI' page (Secondary Access Right Identity)*, page 22.

15 Radio Synchronization

Open the page "DECT | Air Sync".

- In the field "mode", choose "Master".
- Click on "OK".

See *'DECT | Air Sync' page*, page 22.

16 VoIP Configuration

Open the page "VoIP | SIP".

Check whether the option "Add instance id to the user registration with the IP-PBX" is deactivated and delete the "Session Timer".

17 Start SwyxDECT 800 again, so that the effect of the configuration changes can be seen (*1.6.5.14 Reset*, page 28).



It is recommended that the components DECT Master, radio synchronization master and LDAP master are installed on the same station.

1.6.3 CONFIGURATION OF THE STANDBY MASTER BASE STATION (STANDBY SCENARIO 3)

Use of a standby master SwyxDECT 800 base station is optional. This ensures the correct functioning of the system in case of a master base station failure.

This is how you configure the standby master SwyxDECT 800

- 1 Define the address of the SwyxDECT 800 and gain access to SwyxDECT 800 via the web interface (*1.5 Starting the SwyxDECT 800*, page 9).
- 2 Change the standard password ('*General | Admin*' page, page 16).
- 3 Set a static IP address and the DHCP option to "disabled" (*This is how you define the static IP address*, page 18).
- 4 Enter the user name and the password for the system. The inputs should be the same as the user name and password of the master SwyxDECT 800 ('*DECT | System*' page, page 20).
- 5 Define the Codecs and the packet size (*Codecs and the packet size*, page 21).
- 6 Set the mode of the standby master SwyxDECT 800 to "Standby" (*A base station can work in various states (mode)*;, page 21).
- 7 Enter the IP address of the SwyxServer .
- 8 Enter the master IP address ('*DECT | Radio*' page, page 22).
- 9 How to configure radio synchronization: '*DECT | Air Sync*' page, page 22.
- 10 Configure the LDAP replicator and enter the IP address, the user name and the password of the LDAP server and the alternative LDAP server, see *How to configure an LDAP replicator in the standby master base stations*, page 20.
- 11 Start the base station again under 'Reset', so that the effect of the configuration changes can be seen.

1.6.4 CONFIGURATION OF A SLAVE BASE STATION

The initial configuration of a slave SwyxDECT 800 can be saved as a template and used for subsequent configurations of other slave base stations.

This is how you configure a slave base station

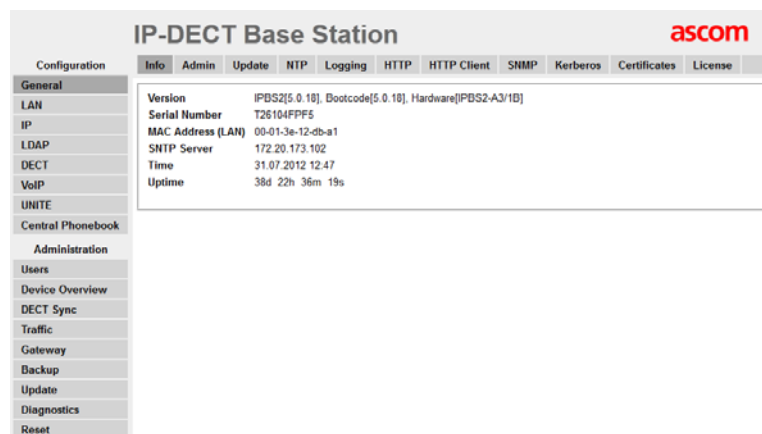
- 1 Define the address of the SwyxDECT 800 and gain access to SwyxDECT 800 via the web interface (*1.5 Starting the SwyxDECT 800*, page 9).
- 2 For a better identification, assign a unique device name under "General | Admin", which contains the location of the device, e.g. 'warehouse' or 'reception'.
- 3 Change the standard password ('*General | Admin*' page, page 16).
- 4 Set the DHCP mode to "Client" (recommended) or to "Disabled" ('*LAN | DHCP Mode*' page, page 18).
- 5 As of version 3.2.2., a LDAP replication between master and slave is no longer necessary. The PARI service takes over this function. In the field "Pari Master IP Address", enter the IP address of the Pari master (=DECT master) ('*DECT | Radio*' page, page 22).
- 6 Change the Codecs and the packet size (*Codecs and the packet size*, page 21).
- 7 Set the mode of the base station to "Slave" (*A base station can work in various states (mode)*;, page 21).
- 8 Enter the IP address for the master and standby master base station ('*DECT | Radio*' page, page 22).
- 9 Configure the air synchronization and set the synchronization mode to "Slave" ('*DECT | Air Sync*' page, page 22).
- 10 Save the settings of the base station (*This is how you save the settings of the base station*, page 26).
- 11 Start the base station again under 'Reset', so that the effect of the configuration changes can be seen.
- 12 Check whether the RGB LED is glowing blue (synchronization OK). If after a minute it is still blinking red, it cannot synchronize with the master base station.

How to configure the remaining base stations

- 1 Define the address for the base station.
- 2 Call the web interface of the base station in the web browser.
- 3 Choose "Update | Config" and use the "Browse" button to select the base station created as a template.
- 4 Click on "Upload".
- 5 For a better identification, assign a unique device name under "General | Admin", which contains the location of the device, e.g. 'warehouse' or 'reception'. See '*General | Admin*' page, page 16.
- 6 Start the base station again under 'Reset', so that the effect of the configuration changes can be seen.
- 7 Repeat steps (1) to (6) for the configuration of all further slave base stations.

1.6.5 CONFIGURATION IN DETAIL

In this chapter, the configuration options offered over the web interface are explained in detail. On the individual websites, the current configured values are shown to the right of the input fields.



IP-DECT Base Station		ascom									
Configuration	Info	Admin	Update	NTP	Logging	HTTP	HTTP Client	SNMP	Kerberos	Certificates	License
General	Version	IPBS2[5.0.18], Bootcode[5.0.18], Hardware[IPBS2-A3/1B]									
LAN	Serial Number	T26104FPF5									
IP	MAC Address (LAN)	00-01-3e-12-d8-a1									
LDAP	SNTP Server	172.20.173.102									
DECT	Time	31.07.2012 12:47									
VoIP	Uptime	38d 22h 36m 19s									
UNITE											
Central Phonebook											
Administration											
Users											
Device Overview											
DECT Sync											
Traffic											
Gateway											
Backup											
Update											
Diagnostics											
Reset											

1.6.5.1 GENERAL

In the menu item "General", the following settings are possible:

- Change the standard password
- Change the name of the base station
- Configure automatic firmware update
- Configure NTP settings (time server)
- Configure logging

'General | Info' page

This page shows the hardware and software versions, and important parameters such as the MAC address and the serial number.

'General | Admin' page

The name of the station (e.g. Warehouse, Purchasing), the user name and the password can be changed here.

Standard user name: admin

Standard password: changeme

'General | Update' page

You can configure an automatic firmware update here. To do so, enter the URL of the script file in the field "Command File URL". Specify in the "Interval" field how often (in minutes) there should be a check for a new file.

'General | NTP' page

To obtain the correct time, enter the IP address of an NTP time server here. The base station compares the internal time at startup, and at the specified interval, with that of the time server.

In the field "TimeServer", enter the IP address of your Windows server or a public time server (e.g. ptbtime1.ptb.de) and the time interval "Interval" for synchronizing the time.

In "Timezone", choose the relevant time zone.

If the required time zone does not appear in the selection list, enter it in the field "String". Observe the following syntax:


```
<String = StdOffset [Dst[Offset], Date/Time, Date/Time]>
```

- Std
Time zone (e.g. EST for Eastern Standard Time)
- Offset
Time difference between time zone and UTC (Universal Time Coordinator)
- Dst
Daylight saving time for the time zone (e.g. EDT for Eastern Daylight Time)
- Second Offset
Time difference between daylight saving time and UTC
- Date/Time, Date/Time
Beginning and end of the daylight saving time
Date-Format: Mm.n.d (d day of the nth week in the month m)
Time format: hh:mm:ss in 24-hour Format
Example:

North Carolina is in the Eastern time zone. Eastern Standard Time (EST) is five hours behind UTC (StdOffset = EST-5), Eastern Daylight Time (EDT) is four hours behind UTC (DstOffset = EDT-4). The daylight saving time for the year in this example begins at 02:00, on a Sunday, in the first week of April (M4.1.0/2). The daylight saving time ends at 02:00, on a Sunday in the fifth week in October (M10.5.0/2).

```
<String = EST-5EDT-4,M4.1.0/2,M10.5.0/2>
```



Note that the week always begins with a Sunday, and the number for Sunday is "0".

'General | Logging' page

There are various ways of obtaining recordings of the base station.

- OFF
No logging

- TCP
The entries are transmitted with TCP. In this case you enter the IP address and the port of the server to which this data should be transmitted.
- SYSLOG
The entries are reported to a "Syslogd" server in the network. This server is responsible for further evaluations or archiving of the entries.
- HTTP
The Syslog entries are forwarded to a web server for further processing (HTTP GET format).
- HTTPS
The Syslog entries are forwarded to a web server for further processing (HTTPS GET format).

Select the logging type you want, and - depending on the server selection - specify the required Syslogd message, the port and the path of the server.

Page 'General | License'

Enter the purchases license number (max. 29 characters).



The license number is not the SARI identification. To enter the SARI ID, see [1.6.2 Configuration of the master base station \(standby scenarios 2 or 3\)](#), page 13, step (14).

1.6.5.2 LAN

Under the menu item "LAN", the following settings are possible:

- Set DHCP mode
- Set static IP address
- Set dynamic IP address
- Set type of LAN link
- Configure VLAN
- View LAN statistics

'LAN | DHCP Mode' page

There are various possible settings for a base station's DHCP mode:

- disabled
Used if the base station should have a static IP address.
- Client
The base station acts as a DHCP client. If a DHCP server is present in the network, an IP address is assigned.
- Automatic
In automatic mode, the base station will act as a DHCP client on power-up. If the base station is restarted by pressing the reset button on the back, it will be given the IP address 192.168.0.1 and the subnet mask 255.255.255.0.

After a change, start the base station again under 'Reset', so that the effect of the configuration changes can be seen.

'LAN | IP' page

It is necessary for the master base station to be given a static IP address. The slave base stations can have dynamic IP addresses, which they have retrieved on the DHCP server in the network.

Enter here the parameters "IP address", "Network mask", "Default Gateway" and "DNS Server".

Ask your network administrator to reserve IP addresses for the master and standby master base stations.

After a change, start the base station again under 'Reset', so that the effect of the configuration changes can be seen.

This is how you define the static IP address

- 1 Choose "LAN | DHCP".
- 2 Choose "disabled" in the field "Mode".
- 3 Click on "OK".
- 4 Choose "LAN | IP".

- 5 In the fields: "IP address", "Network mask", "Default Gateway" and "DNS Server", enter the data you have obtained from your administrator.
- 6 Click on "OK".
- 7 Start the base station again under 'Reset', so that the effect of the configuration changes can be seen.
- 8 Start the web-based configuration. Use the static IP address for this.

This is how you configure a dynamic IP address using DHCP

Slave base stations can be assigned dynamic IP addresses if the network has a DHCP server.

- 1 Choose "LAN | DHCP".
- 2 Choose "Client" in the field "Mode".
- 3 Click on "OK".
- 4 Start the base station again under 'Reset', so that the effect of the configuration changes can be seen.

Page LAN | VLAN

Configure VLAN only if the devices support IEEE802.1. Specify the ID and the priority here.



Be sure to use the same ID that you have also configured in the base station. Otherwise it will not be possible to reach the base station.

Page LAN | LINK

Specify which LAN connection is involved (10m-hdx, 10m-fdx, 100m-hdx, 100m-fdx).

If you select the option 'auto' in the selection list (recommended), the type is detected automatically.

Page LAN | Statistics

You can view the Ethernet event list here. To delete the event list, click on "Clear".

'IP | Settings' page

You can change the prioritization of packets (ToS - Type of Service) and the routing here.

Priority / Diffserv

Leave the default value 0xb8 in the field "ToS Priority - RTP Data", and the value 0x68 in "ToS Priority - VoIP Signaling".

Please note that the ToS value for all devices must be the same.

Port Ranges

In the field "First UDP-RTP Port", enter the port for the RTP data traffic. Specify the number of ports in the field "Number of Ports".



If the fields under "Port Ranges" remain blank, the ports 16384 to 32767 are used.

'IP | Routing' page

By selecting "IP | Routing" you can see the IP routing table.

1.6.5.3 LDAP

Under the menu item "LDAP", the following settings are possible:

- Configure LDAP server
- Check LDAP server status
- Configure LDAP replicator
- Check LDAP replicator status
- Add/ show LDAP entry (Expert Support Tool)

The LDAP protocol (Lightweight Directory Access Protocol) is a network protocol that allows querying and modification of information of a directory service (a distributed hierarchical database in the network).

LDAP allows the base stations to exchange data among themselves and have access to the internal database of the master SwyxDECT 800 base station. This database contains information about logged-on handsets and users, and the system configuration.

'LDAP | Server' page

LDAP is necessary for the replication between the master and standby base stations.

'LDAP | Server Status' or 'LDAP | Replicator Status' page

You can check the current status of the LDAP server or replicator here.

'LDAP | Replicator' page

Firmware version as of 3.x.x

As of firmware version 3.x.x, the mechanism to exchange data between the base stations has changed. The LDAP protocol is only necessary for the replication between the master and the standby master base stations. The LDAP protocol has to be deactivated in the Save base stations. They are now using the new PARI function.

This is how you disable the LDAP replicator

- 1 Select "LDAP | Replicator".
- 2 Deactivate the "Enable" option.
- 3 Select "DECT | Radio" and enter the name and password for the PARI master.



Name and password must be identical to the system name and password under "DECT | System". The data exchange between the base stations is thereby enabled.

How to configure an LDAP replicator in the standby master base stations

- 1 Select "LDAP | Replicator".
- 2 Activate the "Enable" option.
- 3 Enter the IP address of the LDAP server (Master) in the field "Server".
- 4 Enter the IP address of the alternative LDAP server in the field "Alt. Server".
- 5 Enter the LDAP user name in the field "User", and the password in the field "Password".
The same password must be used here that was already configured in the master base station.
- 6 Click on "OK".

1.6.5.4 DECT

Under the menu item "DECT", the following settings are possible:

- Change DECT system name and password
- Set authentication code
- Change registration method
- Select ringtones
- Choose frequency band
- Activate / deactivate network providers
- Configure block dialing
- Configure R-key handling
- Change Codecs and packet size
- Choose mode of base station
- Configure gatekeeper (SwyxServer)
- Input IP address of the master and standby master base stations

- Specify PARI
- Configure air synchronization

'DECT | System' page

The system name and the password must be identical for all base stations within the system.

Authentication code and method

You can configure the system authentication code and the assigned registration procedure (Subscription).

The base station can use the following methods:

- With User AC
With user authentication code
- With System AC
With system authentication code This mode is now used instead of 'Anonymous'.
- Disable
Deactivated

If a handset is subsequently registered in anonymous mode, please chose "With System AC" under "Supscriptions".

Signaling tones

You can change the default here for the signaling tones used. Select the tone you want in the field "Tones" (e.g. EUROPE-PBX).

Frequency band

The base station can work with the following frequency bands:

- 1880 - 1900 MHz, EU
- 1910 - 1930 MHz, South America
- 1920 - 1930 MHz, North America



The usage of the frequencies for North or South America isn't allowed in Europe!

Select the frequency band you want in the field "Frequency" (e.g. Europe).

After a change, start the base station again under 'Reset', so that the effect of the configuration changes can be seen.

Carrier frequency (Carriers)

SwyxDECT 800 provides five carriers for the North American frequency band, and ten carriers for other frequency bands. Under normal circumstances, all carrier frequencies are activated.

Local R-Key Handling

If this function is activated, the keyboard information is handled locally. If it is deactivated, the information is sent directly to the IP PBX.



The "Local R-Key Handling" and "Disable ICE" functions must be activated.

Codecs and the packet size

Choose the preferred Codec and specify the packet size you want. If the option "Exclusive" is activated, the base station is forced to use the Codec.

If the field "SC - Silence Compression" is activated, no information is sent during the pauses in speech. Please DON'T USE this option because the quality will be reduced and it leads in combination with G.729 to serious problems like connection interruptions!

Select "G711a" in the field "Codec" and enter the value "20" in the field "Frame (ms)".



If "Exclusive" is activated, it could be impossible for the Codec to make calls outside the DECT system.

'DECT | Supplementary Services' page

Supplementary Services define how calls are handled when the user is busy or does not answer. The functions below, excepting voicemail notification, are not applicable in combination with SwyxWare.

Voicemail notification (Message Waiting Indication)

In the field "MWI Mode", chose the option "Fixed interrogate and fixed notify number". Then enter "##10" into the fields "MWI Interrogate Number" and "MWI Notify Number".

'DECT | Master' page

Please define which mode the station uses, Master or Slave. Enter the associated parameters.

A base station can work in various states (mode):

- Active
if this base station is a master base station
- Standby
if this base station is a Standby master base station
- Off
if this base station is a slave base station
- Deployment
needed only for coverage tests. Here the voice is forwarded directly from the handset back to the handset.
- Mirror
if this base station is one of the two "Mirrors" (Master1 or Master2)

Activate "Enable Pari function".

IP PBX (Configuration of SwyxServer)

- 1 Select "SIP" as protocol and enter the IP address of the SwyxServer under "Proxy".
- 2 If you use SwyxWare standby, enter under "Alt. Proxy" the IP address of the standby SwyxServer.
- 3 Enter the maximum number of digits of an internal number in the SwyxWare (e.g. 3) in the field "Max. internal number length". This number length is used for deciding whether a call is from an internal or external source, in order e.g. to use the corresponding ring tone.
- 4 Activate the field "Enbloc Dialing".
If this option is activated, all digits of the number can be entered before the handset is lifted. The phone number will be dialed completely (as a block) when the handset is lifted.
- 5 Deactivate the field "Enable Enbloc Send-key".
- 6 Deactivate the field "Allow DTMF through RTP".
- 7 Configure the "SIP Interoperability Settings":
The field "Registration time-to-live" can be left blank, and all checkboxes (e. g. "Hold before Transfer") should be deactivated. For "Hold Signaling", select the setting "sendonly".

If the device is configured as Standby Master (Mode=Standby), the following changes are also needed:

- 8 Enter the IP address of the master in the field "Primary Master IP Address".
- 9 After a change, start the base station again under 'Reset', so that the effect of the configuration changes can be seen.

'DECT | Radio' page

The IP address of the master base station must be known to all base stations.

Enter the address of the master base station in the field "Pari Master IP Address". The IP address of the standby Pari master base station can additionally be entered.

After a change, start the base station again under 'Reset', so that the effect of the configuration changes can be seen.

'DECT | PARI' page (Primary Access Right Identity)

The PARI is a unique system ID and is used for identifying a base station. PARI is automatically assigned to each base station in the system, giving the base station a random system ID. If more than one SwyxDECT 800 system should be present in the same coverage area, the systems must be distinguished by a further PARI.

To view the systems IDs already used, you can perform an RFP scan (*'Diagnostics RFP Scan' page, page 28*).

After a change, start the base station again under 'Reset', so that the effect of the configuration changes can be seen.

'DECT | SARI' page (Secondary Access Right Identity)

The SARI is a unique system ID. It is used for identifying an IP DECT system, and is needed in order to make the IP DECT system executable. Enter the SARI here, if the base station is operated as a master.

Only one SARI is necessary per DECT system, and has to be entered into the master.

On the main website of the IP DECT system "General | Info", this ID is shown as PARK.



Note that in the hardware restart (by pressing the Reset button for more than 10 seconds) the SARI is deleted. So please save the SARI beforehand.

'DECT | Air Sync' page

The base stations use the DECT interface for synchronization. The role of "Air Sync Master" is transferred to one base station. However, there is no need to specify which station synchronizes with which. This is done automatically.

Various synchronization modes (Sync Mode) are available:

- Master
if the base station is the "Air Sync Master". It is recommended to configure this on the DECT master and the standby master.

- Slave
if the base station shall synchronize automatically with the "Air Synch Master".

1.6.5.5 IMPORT CENTRAL PHONEBOOK OR EXPORT AS CSV FILE.

You can also specify an LDAP query as an alternative to the CSV import, see [1.6.5.6 LDAP query](#), page 23.

The imported CSV file should have the following format:

First Name 1; Last Name 1; Phone Number 1

First Name 2; Last Name 2; Phone Number 2

or

First Name 1, Last Name 1, Phone Number 1

First Name 2, Last Name 2, Phone Number 2



A CSV file may contain up to 2000 users.



When importing a global phonebook in CSV format, any existing entries are deleted.

How to import the Global Phonebook in CSV format

- 1 Select "Central Phonebook".
- 2 Activate the field "Enable".
- 3 Under "File Import Settings", "File type" select the CSV file you want to import.
- 4 In the field "Delimiter", select the delimiter of the CSV file (e. g. ";").
- 5 Click on "OK".
- 6 Select "Import" and "Choose file".
- 7 Select the CSV file and click on "Open".

- 8 Click on "Close".

See [7.6.1 Import und Export von Telefonbüchern](#), page 119.

How to export the Global Phonebook as CSV file

The complete phonebook can be exported as CSV file for editing or security purposes.

- 1 Select "Central Phonebook".
- 2 Select "Export".
- 3 A window will open. Click on "Download file".
- 4 In the next dialog, click on "Save".
- 5 Enter the name of the file and select the folder, in which the file should be saved.
- 6 Click on "Save".

1.6.5.6 LDAP QUERY

From SwyxWare 10 on LDAP query with DECT 800 devices is supported. LDAP querying allows DECT devices to retrieve data such as a user's name, address, or phone number from multiple sources in real time from a server. You will then not have to re-import the data each time you make changes via .CSV import. You can define the settings for this in your base station.



To use the LDAP query, you need Estos MetaDirectory or C4B XPhone Connect Directory. If necessary, contact your reseller.

To configure the LDAP query

- 1 Select "Services | Phonebook".
- 2 Select "LDAP" as the "Current View" from the drop-down list.
- 3 In the External LDAP Server section you can specify the following settings:

Function	Explanation
Enable	Select the check box to enable an LDAP server as the phonebook server.
Servers	Enter the address of the LDAP server followed by <Port> to connect to. <Port> designates the TCP port on which the LDAP server makes the phonebooks available.
Use TLS	Select the check box if you have configured the LDAP server to use TLS.
User & Password	If your LDAP server has the user management active, enter the user name and its password here.
Search Base	Enter the start node for the LDAP search here. This depends on the configuration of your LDAP server
Search Filter	It is recommended to leave this field blank.
Search Attributes	Enter "givenNamen,sn" to be able to search the phone book by first and last name
Number Attributes	Enter here the phone number types (business, private, etc.) with the LDAP identifiers you want to have displayed by the contacts found, e. g. "telephoneNumber:business, homePhone:Home, mobile:Mobile". With the suffix <Text> you can better classify the number in the result view.
Display/Sort Attributes	Set here the LDAP field name by which the search results will be sorted. Common field names are: 'sn' (for surname) or 'cn' (for commonname, this is LDAP server dependent and often contains "last name, first name" or "first name last name").

4 Click "OK" to confirm your entries.

1.6.5.7 USERS

The following settings can be selected under the menu item "Users":

- Add user
- Search for user information

- Display all of the system's registered users
- Display locations of the handsets
- Import CSV file with user information
- Export CSV file with user information

See *1.7 Configure DECT handset user*, page 29.

1.6.5.8 DEVICE OVERVIEW

You will find an overview here of all base stations registered in the system, and their current state.

'Device Overview | Radios' page

All base stations that are in the system are listed here. The following information is displayed:

Column	Description
Name	The unique identification name of the base station. The syntax of the name is ipbs-xx-xx-xx, where xx-xx-xx is replaced by the last six hexadecimal digits of the MAC address.
RFPI	Radio Fixed Part Identity - the ID of the synchronization master.
IP Address	The IP address of the base station.
Sync	The current synchronization status. If the station is synchronized, it shows "Master OK" or "Slave OK".
Region	Of synchronization areas, to which the DECT radios belong.
Device Name	The name of the base station, which was configured under "General".
Version	The current software version.
Connected Time	The time that has elapsed while the respective base station has been connected to the master base station.

1.6.5.9 DECT SYNC

'DECT Sync | Air Sync Overview' page

This area only appears with a PARI master station. In order to view the graphic display of the air synchronization, select "DECT Sync | Air Sync Overview".

The internal synchronization for every area is displayed separately in a tree view. Green, yellow and red dots are used in the tree view to display the following synchronization states of the DECT radios:

Green: Synchronizes

Yellow Synchronizes, however a low signal strength is being received (RSSI -83 dBm)

Red: Does not synchronize

The grey dot on top of the tree signifies that it is a referentiated RFPI synchronization.

'DECT Sync | Disturbances' page

This area only appears with a PARI master station.

- 1 Select "DECT Sync | Disturbances".
- 2 Click on "Start".
A list of possible disturbances will be displayed.

'DECT Sync | Status' page

This area only appears in the IPBS.

- 1 Select "DECT Sync | Status".

Field	Description
Sync off	Tuning of the running frequency for synchronization with the synch source.
Drift	Time difference between the current IPBS and its synch source.

Field	Description
Sync lost counter	A counter that increments, when IPBS stops the radio traffic for a while and subsequently re-starts the synchronization procedure.
RFPI	Radio Fixed Part Identity - ID of the synchronization bearer.
Carrier	The carrier frequency used for air synchronization.
Slot	Slot that is used for the synchronization.
Hop	Number of hops from the synchronization master to the synchronization bearer.
RSSI	Received Signal Strength Indication
FER	Frame Error Rate - a value between 0% and 100%. It should be below 80% for a synchronization to be possible.

1.6.5.10 TRAFFIC

This menu lists all information about the data traffic, both of the DECT master and of the DECT radio.

Statistic

Under Statistic, the statistics on the base station's data traffic can be found. If the base station is a master, then the statistics for the entire DECT system are shown. The statistics for the DECT radio are listed under the menu item "Radio Calls".

The following information is available:

'Traffic | Master Calls' page

Field	Description
Calls In	Number of incoming calls in the system.

Field	Description
Calls In Delivered	Number of connected incoming calls in the system.
Calls Out	Number of outgoing calls in the system.
Handover	Number of transfers in the system.
Handover Canceled	Number of failed transfers in the system.
Abnormal Call Release	Number of abnormal call cancellations.
Busy Hour Call Attempts	Number of call attempts made during the hour with the highest call volume.
Busiest hour start time	Start time of the hour with the highest call volume.

'Traffic | Radio Calls' page

Field	Description
Calls In	Number of incoming calls into DECT radios.
Calls Out	Number of outgoing calls from DECT radios.
Handover	Number of transfers in DECT radios.
Handover Canceled	Number of failed transfers in DECT radios.

'Traffic | Handover' page

An active call has just been transferred from one base station to another.

1.6.5.11 BACKUP

The current configuration can be used as a template (e.g. to register base stations), as well as to safeguard data. For more information about importing a stored configuration file into another base station, please refer to *1.10 Update of the SwyxDECT 800*, page 53.

This is how you save the settings of the base station

- 1 Select "Backup | Config".
- 2 Click on "download"
- 3 Click on "Save" and choose a memory location.

1.6.5.12 UPDATE

You can update the software components here:

- Loading the configuration
- Updating the firmware
- Updating the bootloader

See *1.10 Update of the SwyxDECT 800*, page 53.

1.6.5.13 DIAGNOSTICS

The SwyxDECT 800 offers a few functions which can be useful for monitoring and troubleshooting.

'Diagnostics | Logging' page

The base station can generate a number of logs, which can be useful for monitoring and troubleshooting.

Settings	Description
TCP	Recordings relating to the TCP connection setup in the H.225/H.245 protocol.
Gateway Calls	Recording of calls made via the gateway interface.
Gateway Routing	Recording of calls being forwarded via the gateway interface.
H.323 Registrations	Recordings via the RAS registration
SIP/UDP Registrations	Recordings via SIP registration:
SIP/TCP registrations	Recordings via SIP registration:
SIP/TLS registrations	Recordings via SIP registration:

Settings	Description
DECT Master	Logs that were generated by the DECT master software component of a base station.
DECT Radio	Logs that were generated by the DECT radio software component of a base station.
SIP/UDP Registrations	Logs that were generated because of SIP registrations.
Config Changes	Logs that were generated because of configuration changes of the base station or the DECT system.
DECT Stack	A "low level" DECT log, to assist the Support department..
Config Changes	Recordings of configuration changes made at the IP DECT base station.
Radio is busy for speech	To be activated if a warning is to be sent as soon as all voice resources are busy.

Syslog

Use the 'syslog' link to open a new browser window, which shows a real-time display of the data being logged.

'Diagnostics | Tracing' page

The information that can be gathered here with the Trace function is chiefly used for troubleshooting. Tracing should provide assistance for the Support department.

"Diagnostics | Alarms" page

All disturbances are listed here. An alarm is a fault that interferes with the normal operation of the IP-DECT system and may require manual intervention to rectify the fault. A IP DECT master station is able to collect and display disturbances of all RADIOS.

The following fields are displayed:

Field	Description
Time	Date and Time of disturbance
Code	A unique number identifying the alarm. Click on the code to see more details.
Severity	Possible states are: <ul style="list-style-type: none"> ● Critical - Requires immediate action. ● Major - Requires urgent action. ● Indeterminate - The severity of the disturbance cannot be detected.
Remote	IP address of the object giving the alarm.
Source	Software module giving the alarm.
Description	A textual description of the disturbance.

'Diagnostics | Events' page

Under "Diagnostics | Events" a history of all disturbances and errors are displayed. Click on "Clear" to delete the list.

The lists contains the following fields:

Field	Description
Time	Date and time when the alarm started or was removed.
Type	Status of the disturbance: <ul style="list-style-type: none"> ● Critical - Requires immediate action. ● Major - Requires urgent action. ● Indeterminate - The severity of the disturbance cannot be detected.
Code	A unique number identifying the alarm. Click on the code to see more details.
Severity	Possible states are: <ul style="list-style-type: none"> ● Critical - Requires immediate action. ● Major - Requires urgent action. ● Indeterminate - The severity of the disturbance cannot be detected.
Remote	IP address of the object giving the alarm.

Field	Description
Source	Software module giving the alarm.
Description	A textual description of the disturbance.

'Diagnostics | Performance' page

You are able to verify different performance parameters. The parameter are described as follows:

Parameter	Description
CPU	Displays the CPU load.
CPU-R	Displays the CPU load, separated into various tasks.
MEM	Displays the memory usage.
Concurrent calls	Displays the number of active calls.

'Diagnostics | Config Show' page

The configuration of the base station is presented here in text form.

'Diagnostics | Ping' page

The ping function can be used to obtain the response time from the base station for a particular IP address. The connection between individual components of the DECT system can be analyzed with this function.

"Diagnostics | Traceroute" page

The traceroute function shows how the packages are transferred from the IPBS to a certain IP address. The result is being displayed in a list. This list contains the IP addresses including the estimated times.

'Diagnostics RFP Scan' page

Perform an RFP scan in order to obtain the previously used system IDs of other DECT systems within the coverage area.



Please note that performing a scan interrupts all active calls.

'Diagnostics | Service Report' page

The Service Report contains important information for the support.

How to download the service report

- 1 Select 'Diagnostics | Service Report'.
- 2 Click on "download"
- 3 Click on "Save" and choose a storage location for the report.

1.6.5.14 RESET

Some configurations require a restart for the changes to take effect. There are various ways of restarting the SwyxDECT 800 system:

'Reset | Idle Reset' page

In an idle reset, the reset is delayed until there are no more active calls. The idle reset is executed by clicking on the "OK" button.

'Reset | Reset' page

A reset immediately interrupts all active calls and restarts the base station. This reset is executed by clicking on the "OK" button.

'Reset | TFTP' page

If the base station is in TFTP mode, it can only be reached with the help of the program "gwload.exe" (*How to load the firmware using the program "Gwload"*, page 53). This mode should not be used during normal operation of the base station.

'Reset | Boot' page

Only special firmware (minifirmware) is used, which provides the IP stack and the web interface.

Reset using the reset button

You will find the reset button for executing a hardware restart in a small hole on the back of the base station. Use a nonconductor to execute the restart.

The following reset options are available:

- Short pressure on the reset button (1 second)
Generates a restart of the base station.
- Medium-length pressure on the reset button (~ 3 seconds)
Generates a restart of the base station in TFTP mode. In this mode, the base station can only be accessed with the help of the program "Gwload". This mode is intended for development and support departments.
- Long pressure on the reset button (~ 10 seconds)
In this restart, all configuration parameters are set to the default value.



Note that in the hardware restart (by pressing the Reset button for more than 10 seconds) the SARI is deleted. So save the SARI beforehand. See '*DECT | SARI*' page (*Secondary Access Right Identity*), page 22.

1.7 CONFIGURE DECT HANDSET USER

You can create a new user or assign a DECT handset to an existing user.

1.7.1 CONFIGURATION IN SWYXWARE

To allow a SwyxWare user to log on to the SwyxServer with a SIP-compatible device, the respective user rights have to be assigned by the administrator.

How to configure a SwyxWare user for SwyxDECT 800

- 1 Call the SwyxWare administration.
- 2 Open the properties of the relevant user.
- 3 Click on the "Administration" button.
- 4 Switch to the "SIP Registration" tab.
- 5 Activate the checkbox "Allow logon via SIP".
- 6 Define whether the user should always or never be required to authenticate him- or herself, or required to do so in accordance with the default server settings.
- 7 Assign the SIP user ID, the SIP user name and the SIP password. See also the SwyxWare documentation for administrators, chapter **SIP Registration** tab.
The terminal logs on to the SwyxServer using this data. It serves to authenticate the terminal to the SwyxServer for the logon. When closing tab, the uniqueness of the logon parameters are checked.

1.7.2 CONFIGURATIONS WITHIN THE SWYXDECT 800 SYSTEM

There are three ways to add further devices to SwyxDECT 800:

- Use of the handset for automatic linking of the IPEI number with a user (anonymous registration)
This procedure is only recommended for D200 and D300.
- Manual input of the IPEI number (individual registration)
Choose this procedure if a small number of third-party devices do not support automatic logon.
- Importing IPE numbers by means of a CSV file (easy registration)
Choose this procedure, when many users have to be added.



The IPEI number is a unique identification number of the handset. It appears on the outside of the package for the respective handset! Please keep this number for further use! If you enter a wrong PIN three times, you have to deblock the handset by entering this IPEI number.

This is how you add a new user to the master base station

- 1 Select "Users" and click on "new".



Check that the web browser used is configured to allow popup windows on this page. Otherwise the window for creating a new user will not be displayed.

- 2 Specify the user type. You can choose between User and User Administrator. A user administrator can only change settings of the users (excluding the administrator users). An administrator can also change the station settings.
- 3 Enter further user information.
 - Long Name
The name of the user. Enter here the SIP user ID from the SwyxWare user configuration.
 - Display Name
This name is shown on the SwyxPhone Dxxx display during the idle state, if the registration on SwyxWare was successful.
 - Name
Enter here the SIP user ID from the SwyxWare user configuration. The name has only to be entered in case of H.323 registrations. When using SIP, the field has to be left empty.
 - Number
Internal number of the user in the SwyxWare
 - Auth. Name
Enter here the user's SIP user name in the SwyxWare (see *How to configure a SwyxWare user for SwyxDECT 800*, page 29, Step (7))
 - Password
Enter here the password that was configured as SIP password for this user in the SwyxWare, and confirm.
 - IPEI / IPDI

Enter here the unique identification number of the SwyxPhone Dxxx.

It is displayed on SwyxPhone D843, and SwyxPhone D863 when you enter *#34# or *#06#.

For third party devices, the IPEI should likewise be entered here.

- Auth. Code
Enter here the authentication code that you have specified for the system (see Section '*DECT | System*' page, page 20)
- 4 Click on "OK".
 - 5 To create further users, repeat steps (3) to (5).

This is how you assign a SwyxPhone D200 handset to a user (anonymous mode)

- 1 Select "DECT | System".
- 2 In the selection field "Subscriptions", choose the entry "With System AC".
- 3 Enter an authentication code (e.g. 1234) in the field "Authentication Code".
- 4 Click on "OK".
- 5 Activate the handset.
The handset display shows "Base PIN".
- 6 Enter an * (asterisk) followed by the authentication code (e.g. 1234), and press "Yes".
- 7 Enter the PARK number.
You'll find the PARK number under "Users | Users".
- 8 Enter "Protection" = "0" (i.e. off) and press the "Yes" button.
The handset searches for the base station and logs on to the system.
- 9 The IPEI number for the handset appears in the Anonymous list. You can view this list under "Users | Anonymous".
- 10 Now call the following string with this handset:
<MasterID><internal number>*<authentication code#>
You'll find the MasterID under "DECT | Master". If you enter an authentication code, it must be started with * and concluded with #. If no authentication code is specified, # is not required.
Example:

- MasterID "0", user's internal number "200" and authentication code "1234".
Dial: *0*200*1234#
- MasterID "0", user's internal number "200" and no authentication code.
Dial: *0*200

By doing this, you assign a registered user to the handset.

- 11 Hook on after you hear the dial tone.
- 12 Check that the user assignment was successful. To do this, click on "show" in the web interface under "Users | Users".
A list appears showing all users and their IPEI assignment.
- 13 Repeat steps (5) to (12) with all further handsets.
- 14 In the web interface under "DECT | System | Subscriptions", select the entry "Disable" to deactivate the anonymous registration.
- 15 Click on "OK".

This is how you assign a SwyxPhone D300 handset to a user (anonymous mode)

- 1 Select "DECT | System".
- 2 In the selection field "Subscriptions", choose the entry "With System AC".
- 3 Enter an authentication code (e.g. 1234) in the field "Authentication Code".
- 4 Click on "OK".
- 5 Switch on the SwyxPhone D300 handset.
The handset display shows "Subscribe".
- 6 Enter the park number under "PARK" in the handset. You'll find this in the web interface under "Users | Users".
- 7 Enter the system authentication code in the handset. Use the same code that you gave in step (3).
- 8 Enter a profile name in the handset.
- 9 Enter "no" in the handset under "Protected", and confirm the input by pressing "Yes".
- 10 The handset searches for the base station and logs on to the system.

If the logon was successful, "Subscription successful" appears in the display.

- 11 The IPEI number for the handset appears in the Anonymous list in the web interface. You can view this list under "Users | Anonymous".
- 12 Now call the following string with this handset:
<MasterID><internal number>*<authentication code#>
You'll find the MasterID under "DECT | Master". If you enter an authentication code, it must be started with * and concluded with #. If no authentication code is specified, # is not required.
Example:
 - MasterID "0", user's internal number "200" and authentication code "1234".
Dial: *0*200*1234#
 - MasterID "0", user's internal number "200" and no authentication code.
Dial: *0*200
 By doing this, you assign a registered user to the handset.
- 13 Hook on after you hear the dial tone.
- 14 Check that the user assignment was successful. To do this, click on "show" in the web interface under "Users | Users".
A list appears showing all users and their IPEI assignment.
- 15 Repeat steps (5) to (14) with all SwyxPhone D300.
- 16 In the web interface under "DECT | System |", in the Subscriptions field, select the entry "Disable" to deactivate the anonymous registration.
- 17 Click on "OK".

SwyxPhone D843 and SwyxPhone D863 can be registered via the IPEI No. in a number of ways.

Anonymous Registration

When performing an anonymous registration, not the administrator but the user himself registers all handsets. The IPEI is thus automatically linked to the user.

The anonymous registration requires two steps. First, the user is created in the DECT system. Then, the user assigns handset and user via the handset of the user.

How you assign a SwyxPhone Dxxx handset to a user

- 1 Select "Administration | Users".
- 2 Click on "New".
- 3 Complete the following fields, while leaving the "IPEI/IPDI" field empty. Do not delete the automatically generated "Auth. Code":

Field name	Description
Long Name	Mandatory field: Name of the user - must be unique within the system
Display Name	Optional
Name	When using SIP, this field must be empty!
Number	Mandatory field: Extension - must be unique within the system
Password	The SIP password. The password must be entered into SwyxWare and is thus required during logon.
Idle Display	optional, appears on the display while handset is on hook.

- 4 Click on "OK".
- 5 Repeat steps (2) to (4) for all users.
- 6 Assign the handsets to the users.
- 7 Select "DECT | System".
- 8 Select "With System AC" in the "Subscription" list field to activate the anonymous registration.
- 9 Click on "OK":
- 10 Run "Over Air Subscription" by using the system authentication code. The IPDI number appears in the "Anonymous" list. To start the list, select "Users | Anonymous".

On the handset, the user has to carry out the following steps:

- 11 Dial the respective master ID + extension + individual AC code and hang up.

If "0" is the master ID, "200" the extension and "1234" the AC code, the user has to dial "*0*200*1234#" If "200" is already assigned to another handset, this identity will be assigned to the new handset. The old handset is moved to the "Anonymous" list, as soon as the new handset is registered.

12 Steps (10) to (11) have to be repeated for all handsets.



For security reasons, set the "Subscription Method" to "Disabled" to prevent someone who knows the AC system from logging on to the IP DECT system.

Individual Registration

Individual registration should be used, when only a few handsets are added to the DECT system. In this case, the IPEI will be entered manually.

- 1 Select "DECT | System".
- 2 Select "With System AC" or "With User AC" in the "Subscriptions" list field and click on "OK".
- 3 Select "Users".
- 4 Click on "New".
- 5 Complete the following fields:

Field name	Description
Long Name	Mandatory field: Name of the user - must be unique within the system
Display Name	Optional
Name	When using SIP, this field must be empty!
Number	Mandatory field: Extension - must be unique within the system
Password	The SIP password. The password must be entered into SwyxWare and is thus required during logon.
Idle Display	optional, appears on the display while handset is on hook.
IPEI/IPDI	Mandatory field: The handset's unique identification number

Field name	Description
Auth. Code	Optional: The user's individual authentication code. By default, this code is generated automatically, however, it can be changed manually.

- 6 Run "Over Air Subscription" by using the individual authentication code.
- 7 Click on "OK".

Easy Registration

Easy registration should be used, when many handsets are added to the DECT system. In this case, the IPEI will be written into a CSV file with a barcode reader.

The easy registration requires two steps. First, users are created by importing a CSV file into the DECT system. Then the handsets are automatically assigned to the users via the handset.

- 1 Select "Users".
- 2 Click on "Import".
- 3 Click on "Browse" to locate the CSV file.
- 4 Click on "Open | Next" and verify that all numbers have been entered correctly.
- 5 Click on "Next".
- 6 Select "DECT | System".
- 7 Select "With System AC" or "With User AC" in the "Subscriptions" list field and click on "OK".
- 8 Run "Over Air Subscription" by inserting a battery into the handset. The handsets automatically connect to the IP DECT system and the correct user.

1.8 PORTABLE DEVICE MANAGER (PDM)

The Portable Device Manager is a program with which you can configure the handsets SwyxPhone D843 and SwyxPhone D863. With the Portable Device Manager, you can:

- Update the software on the devices
- Upload files to the devices (e.g. contacts)
- Store various parameters
- Distribute firmware to the handsets



Note that the distribution of the firmware update to the handsets can only be performed when the handset is in the designated programming cradle.

1.8.1 INSTALLATION

Requirements

- Windows XP Service Pack 2, Windows 7 Professional (32-bit/64-bit), Windows 7 Enterprise (32-bit/64-bit) or Windows 7 Ultimate (32-bit/64-bit).
- Sun Java Runtime Environment (JRE) version 6 or higher
- Acrobat Reader 4.0 or higher
- Connection to the device via RS232 Serial Port, USB, USB 1.1 or USB 2.0 - depending on the device

How to install the Portable Device Manager

- 1 Close any active programs.
- 2 Put the installation DVD in your DVD drive and execute the file "Setup.exe".
- 3 Follow the instructions of the setup.



If an older version of Portable Device Manager is already installed, the wizard will first uninstall the old version, before installing the new.

1.8.2 CONFIGURATION OF THE PORTABLE DEVICE MANAGER

In the Start menu under "Programs | Ascom WinPDM", select the option "Ascom WinPDM". The program is started.



Windows Firewall warnings appear. These can be ignored without any effects on the WinPDM software. However, the warnings appear every time, WinPDM is started.

After starting the Portable Device Manager for the first time, the "Create site" dialog appears.

- 1 Enter the name of the site in the field "Site name".
- 2 Use the "Description" field enter a description of the site (optional).
- 3 Click on "OK".



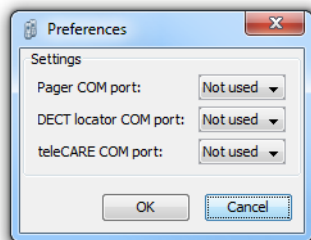
In order to use the Portable Device Manager, at least one site must be available. However, sites may also be added later. Moreover, further sites may be added.

1.8.2.1 OPTIONAL COM PORT SETTINGS

When using a USB connection, these settings are not required. They are only necessary when using a COM port.

How to configure the COM port settings:

- 1 In the menu, click on "Options | Preferences".



- 2 Select the COM port that you want to use for connecting the device with the PC and click on "OK".

1.8.2.2 DEFINITION FILES

Before using any templates in the Portable Device Manager, you have to import the definition files.

See *1.8.11.2 Import of parameter definition files*, page 43.

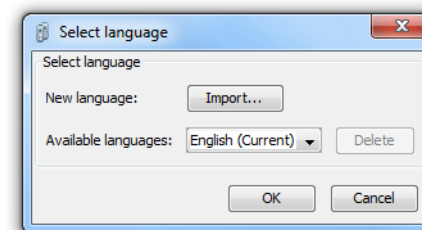
1.8.2.3 MENU LANGUAGE OF THE PORTABLE DEVICE MANAGER

You can select the menu language of the Portable Device Manager. Further language files may be added in XML format. The standard language is English, which will be stored as XML file into the installation directory during installation: C:\Program Files\Ascom\PDMAgent\default-translations.xml.

This file may be copied and translated into other languages, and subsequently be imported as a new language file after translation.

How to select a language.

- 1 Select "Options | Select language".

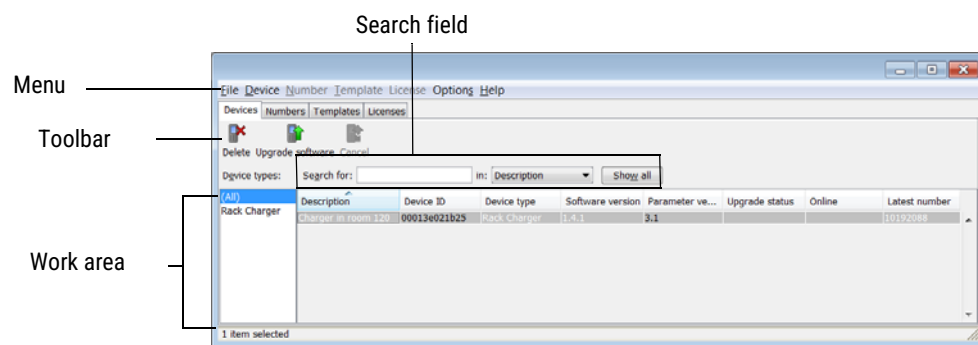


- 2 Click on "Import...". In the "Import files" window, you can select the desired language file.
- 3 Confirm your selection with "Open".
- 4 In the "Available languages" list, choose the language you want to use.

5 Click on "OK".

1.8.3 THE PDM USER INTERFACE

The Portable Device Manager consists of three areas: Menu, Toolbar and Work Area. The toolbar has three tabs: "Devices", "Numbers", "Templates" and "Licenses". When one of these tabs is selected, the available device types will be shown on the left side of the work area. The right pane shows the devices, numbers or templates, which have already been configured.



Search field

Search fields are placed at the top of the work area, which may vary according to the selected tab. Thus, a variety of search criteria is available: According to whether the search has been successful or not, the color of the search field switches from green (match) to red (no match).

Sort the list

By default, the lists are sorted by the content of the first column. To sort the list by another column, click on the respective column header. To reverse the sort order, simply click on the column header again. The current sort order is indicated by an arrow above the column header.

Filter the list

By default, the list in each tab shows all available devices, numbers and templates. By selecting a device type on the left, you can filter the list.

1.8.4 TABS





The tabs "Devices", "Numbers", "Templates" and "Licenses" are as follows:

1.8.4.1 "DEVICES" TAB

All devices configured for this location are shown in a detailed list.

The following information is displayed on the tab:

- Description - optional information on the device, which can be added via the Portable Device Manager user (e.g. location of the device)
- Device ID - The unique identifier of the device
- Device Type - the device model
- Software version - software version on the device
- Parameter version - parameter version in the numbers
- Upgrade status - displays one of the following icons:

-  Software upgrade is in process. It is also possible to display a progress bar, when the device is being upgraded.
-  Software upgrade pending, request sent or accepted
-  Retry
-  The last upgrade failed or has been aborted.

- Online - shows, if the device is connected to a PC, on which the Portable Device Manager is activated. The check mark icon indicates a connected device.
- Latest Number - shows the last number of the device.

1.8.4.2 "NUMBERS" TAB

Any numbers that have been configured at the site are listed here.

The following information is displayed on the tab:

- Description - optional information on the device, which can be added via the Portable Device Manager user (e.g. user of the number)
- Number - the unique identifier of the number
- Device type - the device model the number is used for
- Parameter version - version of the parameters in the numbers
- Device ID - unique identifier of the device that the number is assigned to
- Online - shows, if the device the number is assigned to is connected to a PC, on which the Portable Device Manager is activated. The check mark icon indicates a connected device.
- Status - shows the parameter synchronization status. A number can also be synchronized. "Synchronizing", "Synchronized" etc. When the number is offline, the status of the database is shown: "Synchronized" oder "Not synched".
- Saved - shows if the number's parameters have been stored in the database. The check mark icon indicates that the parameters have been stored.
- Last login - shows the date and time of the latest online status and login of the device to the Portable Device Manager.
- Last run template - shows the template that was last used for this number.

See *1.8.8 Numbers*, page 38.

1.8.4.3 "TEMPLATES" TAB

Any templates that have been configured at the site are listed here.

The following information is displayed on the tab:

- Name - name of the template
- Device Type - the device model
- Parameter version - shows the parameter version

1.8.4.4 "LICENSES" TAB

Any devices that have been configured at the site are listed here.

- Device ID - The unique identifier of the device
- Device Type - the device model
- Online - shows, if the device is connected to the device manager. The check mark icon indicates that the device is online.
- Serial number - this number identifies the hardware of the device
- Number - serves as a unique identifier
- Software version - shows the software version of the device
- Status - shows the licensing synchronization status.

The following states are possible:

Sending	The Portable Device Manager sends license information to the device
Server failure	The communication between the Portable Device Manager and the licensing server is interrupted
Needs update	A license has been moved from one handset to another, however, the last license did not exist in the handset.

At the bottom of the work area, the licensing options of the device are listed. Furthermore you can see whether the options are activated or not.

1.8.5 THE NEW DEVICE WIZARD

When a new device is connected to the Portable Device Manager, the New Device Wizard window opens.

How to use the New Device Wizard

Please select, if you would like to:

- associate the device with an available number (*How to associate a number with a device*, page 39), or
- run a template (*How to run a template to configure further devices*, page 38) or

- Modify device parameters, or
- leave the dialog without any changes.

1.8.6 USE THE WIZARD TO CREATE A NEW NUMBER

If a new device is associated to an unknown number, the New Number Wizard window opens.

How to use the New Number Wizard

Please select, if you would like to:

- save the number and the parameters in the database, so you can subsequently edit them in offline mode, or
- Edit device parameters directly without storing them in the database, or
- run a template (*How to run a template to configure further devices*, page 38), or
- leave the dialog without any changes.

1.8.7 SITE MANAGEMENT

By creating a site, you are able to manage device, software and licenses. Any settings are stored in the database.



There is a difference between opening and loading a site. If a site is opened, the "Site management" dialog closes and you may start editing the devices of this site. When a site is loaded, however, the "Site management" dialog stays open, making it possible to configure further settings for the site.

1.8.7.1 SITE HANDLING

How to create a new site

- 1 In the "File" menu, select the option "Site management".
- 2 Click on "New...".

- 3 Enter the name and a description (optional) of the site and click on "OK".
- 4 Click on "Close".

How to open a site

- 1 In the "File" menu, select the option "Site management".
- 2 Select the site to be opened and confirm your selection with "Open".

How to load a site

- 1 In the "File" menu, select the option "Site management".
- 2 Select the site you want to load.
- 3 Click on "Load". The site is displayed in the main window.
- 4 Click on "Close".

How to delete a site

- 1 In the "File" menu, select the option "Site management".
- 2 Make sure that the site to be deleted is not active. If it is still active, please load another site. If there is only one site remaining, it cannot be deleted.
- 3 Select the site you want to delete and click on "Delete".
- 4 Click "Yes" in the "Delete site" dialog.
- 5 Click on "Close".

How to import a site

When importing a site, numbers with parameters as well as devices are also imported. Templates, software and definition files are not imported.

- 1 In the "File" menu, select the option "Site management".
- 2 Click on "Import...".
- 3 Select the site file (*.ste) to be imported and click on "Open".
- 4 Enter the name of the site in the "Input" dialog and click on "OK".

- 5 Click on "Close".

How to export a site

- 1 In the "File" menu, select the option "Site management".
- 2 Select the site you want to export and click on "Export...".
- 3 Enter a file name (*.ste) for the site and chose a storage location.
- 4 Click on "Save".
- 5 Click on "Close".

1.8.8 NUMBERS

How to create a new number

- 1 Select the "Numbers" tab.
- 2 In the "Number" menu, select the option "New...".
- 3 Select the device type in the list field.
- 4 Select the parameter version in the list field "Parameter version".
- 5 Select the template to be used for this number in the "Template" list field. If you do not want to use a template, select "None".
- 6 Select one of the following options:
 - "Single" - to create a single number, select the option "Single" and enter a number.
 - "Range" - to create a number range, select the option "Range" and enter the start number and the end number. Confirm the entries with "OK".



The maximum number range that can be added is currently 100 numbers.

How to store a number in the database

The number of a mobile device can be stored in the database.

- 1 In the "Numbers" tab, select the device, which number you want to save.
- 2 In the "Number" menu, select the option "Save". The number is stored in the database.

How to change a number description

- 1 Select the option "Number" in the "Numbers" tab.
- 2 Select "Enter description".
- 3 Enter the desired descripton "e.g. user of this number).
- 4 Click on "OK".

How to edit device parameters

The "Edit parameters" dialog lists all parameters of a device/ number. The parameters are displayed in a tree structure.

- 1 Select the option "Number" in the "Numbers" tab.
- 2 Select "Edit".
- 3 Select the parameters to be edited on the left side.
- 4 Make your changes in the "Value" column. After a change, the color of the parameter in the tree structure changes to blue.
- 5 Click on "OK" to save the changes.
- 6 By clicking on "Cancel" any changes are rejected.



When the device is connected to the Portable Device Manager, any saved changes are automatically sent to the device.

How to run a template to configure further devices

If a template has been created for a device, it can be used to configure further devices.

- 1 Select the device(s) in the "Numbers" tab.
- 2 In the "Number" menu, select the option "Run template...".

The "Run template" dialog appears.

- 3 Select the template you want to use.
- 4 Click on "OK".

How to associate a number with a device

Before the synchronization of parameters between the Portable Device Manager and devices are possible, a number has to be associated with the device. It is possible to enter several Device IDs in advance and subsequently assign them to a number.

- 1 Select the "Numbers" tab.
- 2 In the "Number" menu, select the option "Associate with device...".
- 3 Select the device you want to associate the number with and click on "OK".

If the selected device is online, it will immediately be updated with the number. Otherwise, it will be updated the next time the device is online.

How to delete a number from the database

- 1 Select the "Numbers" tab.
- 2 Select the number you want to delete.
- 3 In the "Number" menu, select the option "Delete".
The "Delete Number" dialog opens.
- 4 Click on "Yes".

How to rename a number

- 1 Select the "Numbers" tab.
- 2 Select the number you want to rename.
- 3 In the "Number" menu, select the option "Rename...".
The "Rename number" dialog opens.
- 4 Enter a new prefix (optional) and a new number.
- 5 Click on "OK".



If a number is highlighted in red, it cannot be renamed.

How to copy a number

- 1 Select the "Numbers" tab.
- 2 Select the number you want to copy.
- 3 In the "Number" menu, select the option "Copy...".
The "Copy number" dialog opens.
- 4 Enter a new prefix (optional) and a new number.
- 5 Click on "OK".

How to import contacts from a file

You can import files containing your contacts into the Portable Device Manager, in order to subsequently synchronize them with the device. This feature also enables the transfer of contacts from older handsets.



When importing a local phonebook, the entries of the current handset phonebook are overwritten by the new entries.

- 1 Select the "Numbers" tab.
- 2 Select a number.
- 3 In the "Number" menu, select the "Import contacts | From File" option.
- 4 Select a file with your contacts.
- 5 Click on "Open".
The contacts from the imported files are synchronized with the selected handset.

How to import contacts via numbers

The feature enables the transfer of contacts from one handset to another via numbers, which are already saved in the Portable Device Manager.



When importing a local phonebook, the entries of the current handset phonebook are overwritten by the new entries.

- 1 Select the "Numbers" tab.
- 2 Select a number.
- 3 In the "Number" menu, select the option "Import contacts" | "From number".
- 4 Select a number.
- 5 Click on "OK".
The contacts are imported into the handset.

How to export contacts into a file

Contacts can be exported from a handset into a CSV file, in order to later import them into another handset with the "Import contacts from a file" feature.

- 1 Select the "Numbers" tab.
- 2 Select the handset, whose contacts you want to export.
- 3 In the "Number" menu, select the option "Export contacts".
- 4 Enter a descriptive file name and click on "Save".

1.8.9 DEVICES

A device can be a DECT handset, a charger, or an alarm transmitter developed to work together with the Portable Device Manager.

All device functions can be found in the "Devices" tab.

- Devices can be added to a site by connecting the device to the PC.
- It is possible to transfer information from one device to another.

- Devices can be reset to factory settings.
- Devices can be updated with new software.

1.8.9.1 ADD DEVICES TO A SITE

If a larger quantity of new devices are to be added, please proceed as follows:

How to add multiple new devices to a site

- 1 Create a template with any required parameter settings for this site. See *1.8.10 Templates*, page 41.
- 2 Add a number range and run the template.
- 3 Edit the parameters and change the settings according to your requirements.
- 4 Connect the devices, one after the other, and associate them with the numbers of the site database.

Single devices are added in the same way.

How to synchronize a device

When a device is connected to the PC, it is synchronized with the associated number in the Portable Device Manager.

During synchronization, any parameters that have been changed on the device are updated in the Portable Device Manager. Parameters that have been updated in the Portable Device Manager are sent to the device. If a parameter has been changed on both sides, the setting made in the Portable Device Manager takes precedence.

- 1 Select the "Numbers" tab.
- 2 Connect the device to a PC, on which the Portable Device Manager is running. If the number is saved with a parameter definition, the device is automatically synchronized.

How to delete a device from the site database

- 1 In the "Device" tab, select the device you want to delete.

- 2 In the "Device" menu, select the option "Delete".
- 3 Click "Yes" in the "Delete Device" dialog.



A device that is online cannot be deleted.

How to replace a device

If you would like to replace a device with a new one, you can assign the number used for the old device. However, the new device must be the of same device type.

Requirements:

- If the device to be replaced is still in use, make sure it is synchronized.
- Connect the new device with the Portable Device Manager.
- Associate the new device with the number of the old device:
 - 1 Select the "Numbers" tab.
 - 2 In the "Number" menu, select the option "Associate with device...".
 - 3 Select the device you want to associate and click on "OK".
The number will no longer be associated with the old device.

How to add a description to a device.

The location of the device could be a possible description.

- 1 Select the "Devices" tab.
- 2 Select the device, for which you would like to add a descripton.
- 3 In the "Device" menu, select the option "Enter descripton".
- 4 Enter the description and confirm your entry with "OK".

How to perform a factory reset

A factory reset means that the device parameters are reset o its factory settings. The numbers in the database associated with the device will not be affected.



The device must be online.

- 1 Select the "Devices" tab.
- 2 Select the device(s) to be reset.
- 3 In the "Device" menu, select the option "Factory reset".
- 4 Click on "OK".

How to get an overview on the device settings

- 1 Select the "Devices" tab.
- 2 Select the device.
- 3 Click on "Properties" in the "Device" menu.
The following information is displayed (depending on the version of the Portable Device Manager):
 - Description of the device (if provided)
 - Device ID
 - Device type
 - Parameter version
 - Software version
 - Last known number
 - Online status
 - File upload information

1.8.10 TEMPLATES

Templates are collections of customized parameter values. You can use these templates to store settings on multiple devices or on special device types.



Templates created at a site may be used for other sites, too.

How to create a parameter template

- 1 Select the "Templates" tab.
- 2 In the "Template" menu, select the option "New".
- 3 Select the device type and the parameter version and enter the name of the template.
- 4 Click on "OK".

How to rename a template

- 1 Select the "Templates" tab.
- 2 Select the template you want to rename.
- 3 In the "Template" menu, select the option "Rename...".
- 4 Enter the new name into the "Rename template" dialog.
- 5 Click on "OK".

How you copy a template

- 1 Select the "Templates" tab.
- 2 Select the template you want to copy.
- 3 In the "Template" menu, select the option "Copy...".
- 4 Enter the new name of the template into the "Copy template" dialog.
- 5 Click on "OK".

How to edit a template

- 1 Select the "Templates" tab.
- 2 Select the template you want to edit.
- 3 In the "Template" menu, select the option "Edit...".
- 4 Edit the parameters in the "Edit template" dialog.
- 5 Click on "OK".

How to delete a template

- 1 Select the "Templates" tab.
- 2 Select the template you want to delete.
- 3 In the "Template" menu, select the option "Delete".
- 4 Click "Yes" in the "Delete template" dialog.

How to apply a template

- 1 Select the "Templates" tab.
- 2 Select the template you want to use.
- 3 In the "Template" menu, select the option "Apply to...".
- 4 Select the device(s) you want to use the template for.

1.8.11 FILE MANAGEMENT

This chapter covers the file management for parameter definition files, software files, language files and company phonebook files.

1.8.11.1 DEFINITION OF THE FILE VERSION - PARAMETER VERSION

Both definition files and software files for the devices contain parameters and are indicated by a version number.

If a device is associated with a number in the Portable Device Manager and being updated to a new software version containing a different parameter version, a new definition file is not always necessary. An old definition file can be used multiple times. If, however, new parameters are added by the new parameter version, these parameters are not editable. If the old definition file is not available anymore, it is highlighted in red.

How to import a package files

Package files contain different file types, e.g. software files, parameter definition files and/or template files. If a certain file is not included in a package, it can be imported separately.

- 1 In the "File" menu, select the option "File management".
- 2 Select the "Parameter definition" or "Software" tab, and click on "Add".
- 3 Select the package files (*.pkg) to be imported and click on "Open". All files contained in this package will be imported.

1.8.11.2IMPORT OF PARAMETER DEFINITION FILES

Parameter definition files are usually already included in the package files (*.pkg), which you have received from your supplier.

How to import a parameter definition file

- 1 In the "File" menu, select the option "File management".
- 2 Select the "Parameter definition" tab, and click on "Add".
- 3 Select the definition file to be imported and click on "Open". Only files with the file extension *.def and *.pkg are displayed.
- 4 Click on "Close".

1.8.11.3IMPORT OF NEW DEVICE SOFTWARE

Software files (*.bin) are usually already included in the package files (*.pkg), which you have received from your supplier.

How to import software files

- 1 In the "File" menu, select the option "File management".
- 2 Select the "Software" tab, and click on "Add".
- 3 Select the software files to be imported and click on "Open". Only files with the file extension *.bin and *.pkg are displayed.
- 4 Click on "Close".

1.8.11.4IMPORT OF LANGUAGE FILES FOR THE DEVICES

In order to add a language file to a device, the file (.lng) you have received from your supplier must have been imported into the Portable Device Manager. After that you can upload it to your device.

How to import a language file

- 1 In the "File" menu, select the option "File management".
- 2 Select the "Language" tab, and click on "Add".
- 3 Select the language file (*.lng) to be imported and click on "Open". Only files with the file extension *.lng are displayed.
- 4 Click on "Close".

See *1.8.11.6 Upload of a language file to the device*, page 43.

1.8.11.5IMPORT OF PHONEBOOK FILES

It is possible to import a phonebook for later use.

How to import a phonebook file

- 1 In the menu, select the option "File management".
- 2 Select the "Company Phonebook" tab, and click on "Add".
- 3 Select the phonebook files to be imported and click on "Open". Only files with the file extension *.cpb are displayed.
- 4 Click on "Close".

1.8.11.6UPLOAD OF A LANGUAGE FILE TO THE DEVICE

It is possible to upload a language file to any device, which supports the upload of language files.

How to upload a language file to a device

- 1 In the "Devices" tab, select the device to which you want to upload the language file. It is possible to select multiple devices of the same type.
- 2 In the "Device" menu, select the option "Upload Language...".
- 3 Import the language file first, if applicable. See *1.8.11.4 Import of language files for the devices*, page 43. Otherwise, skip this step.
- 4 Select the language file from the "Available files" list.
- 5 Click on "OK".

1.8.11.7 UPLOAD OF A COMPANY PHONEBOOK

It is possible to upload a phonebook to any device that supports phonebook uploads.

How to upload a phonebook to a device

- 1 Select the "Devices" tab.
- 2 Select the device, to which you want to upload the phonebook. It is possible to select multiple devices of the same type.
- 3 In the "Device" menu, select the option "Upload company phonebook...".
- 4 Import the phonebook file first, if applicable. See *1.8.11.5 Import of phonebook files*, page 43. Otherwise, skip this step.
- 5 Select the phonebook file from the "Available files" list.
- 6 Click on "OK".

1.8.11.8 UPGRADE A DEVICE WITH NEW SOFTWARE

It is possible to upgrade the software in a device.

How to perform an upgrade

- 1 Select the "Devices" tab.

- 2 Select the device. It is possible to upgrade multiple devices, however, only devices of the same type can be selected.
- 3 In the "Device" menu, select the option "Upgrade".
- 4 Import the software file first, if applicable. See *1.8.11.3 Import of new device software*, page 43. Otherwise, skip this step.
- 5 Select the software file from the "Available files" list.
- 6 Click on "OK".
The software will be uploaded to the device. A progress bar shows the progress of the download.
The device restarts automatically after a successful download.
- 7 To cancel the upgrade, select "Device | Cancel upgrade" in the menu.

1.8.11.9 DELETE IMPORTED FILES

How to delete parameter definition files

- 1 In the "File" menu, select the option "File management".
- 2 Select the "Parameter definition" tab.
- 3 Select the files to be deleted.
- 4 Click on "Delete".
- 5 Click "Yes" in the "Delete files" dialog.
- 6 Click on "Close".

How to delete software files

- 1 In the "File" menu, select the option "File management".
- 2 Select the "Software" tab.
- 3 Select the software to be deleted.
- 4 Click on "Delete".
- 5 Click "Yes" in the "Delete files" dialog.
- 6 Click on "Close".

How to delete language files

- 1 In the "File" menu, select the option "File management".
- 2 Select the "Language" tab.
- 3 Select the language file to be deleted.
- 4 Click on "Delete".
- 5 Click "Yes" in the "Delete files" dialog.
- 6 Click on "Close".



Only language files for devices (*.lng) can be deleted. Language files of the Portable Device Manager (*.xml) are not available

How to delete phonebook files

- 1 In the "File" menu, select the option "File management".
- 2 Select the "Company Phonebook" tab.
- 3 Select the phonebook files to be deleted.
- 4 Click on "Delete".
- 5 Click "Yes" in the "Delete files" dialog.
- 6 Click on "Close".

1.8.12 IMPORT AND EXPORT OF NUMBERS AND TEMPLATES

The purpose of importing and exporting numbers and templates is to be able to move them to another site, or to use them at a later time.

The parameter configuration saved with the numbers can be exported into a file. This file can subsequently be used to pre-configure devices before delivery to the customer.

1.8.12.1 IMPORT OF NUMBERS

How to import a number file

- 1 In the "File" menu, select the option "Import | Numbers...".
- 2 Select the number files to be imported (*.xcp) and click on "Open".



In case of a number conflict during the import, the error message "Number import failed: Number already exists" appears.

1.8.12.2 IMPORT OF TEMPLATES

How to import templates

- 1 In the "File" menu, select the option "Import | Templates...".
- 2 Select the template files to be imported (*.tpl) and click on "Open".



In case of a naming conflict during import, the template will be saved under the same name, plus a number in brackets. The old template name will not be changed.

1.8.12.3 EXPORT NUMBERS TO A FILE

It is possible to configure numbers for a site and export these settings to a file. One or several numbers can be selected. The exported file can subsequently be used to configure new devices.



Only numbers in the database can be exported.

How to export numbers into a file

- 1 Select the "Numbers" tab.

- 2 Select the number(s).
- 3 In the "Number" menu, select the option "Export...".
- 4 Enter the file name for the number file (*.xcp) and confirm your selection by clicking on "Save".

1.8.12.4 EXPORT OF TEMPLATES

It is possible to export templates. One or several templates can be exported.

How to export templates

- 1 Select the "Templates" tab.
- 2 Select the template(s) you want to export.
- 3 In the "Template" menu, select the option "Export...".
- 4 Enter the file name for the template file (*.tpl) and confirm your selection by clicking on "Save".

1.8.13 ADMINISTRATION

All settings such as configuration, sites and/or templates are stored in the database of the Portable Device Manager. It is thus recommended to do backups on a regular basis. The following data is included in the backup: definition files, templates, devices and numbers including their parameters.

How to perform a backup of the database files

- 1 Close the Portable Device Manager.
- 2 The database files are located in the following folder (depending on the operating system):
 - Windows XP - C:\Documents and Settings\\Application Data\Ascom
 - Windows 7 - C:\Users\\Appdata\Roaming\Ascom
- 3 Copy the Portable Device Manager folder to a CD or a network drive.

How to restore the Portable Device database files

- 1 Close the Portable Device Manager.
- 2 Copy the copied Portable Device Manager folder into the following folder (depending on the operating system):
 - Windows XP - C:\Documents and Settings\\Application Data\Ascom
 - Windows 7 - C:\Users\\Appdata\Roaming\Ascom

1.8.14 UNINSTALL THE PORTABLE DEVICE MANAGER

How to uninstall the Portable Device Manager

- 1 Select the PDM application in the Windows start menu.
- 2 Select "Uninstall". Follow the wizard instructions.

1.9 CORDLESS PHONE MANAGER

The Cordless Phone Manager is a program with which you can configure the SwyxPhone D200 and SwyxPhone D300 handsets. With the Cordless Phone Manager, you can:

- create and download global and personal phonebooks,
- change the ringtones, melodies and start-up screen,
- download software,
- up- and download registration data,
- lock and release registration data,
- generate PIN numbers for users,
- specify and change PBX settings in the SwyxPhone D300,
- download an additional language in the SwyxPhone D300.

Note that the availability of functions is dependent on the chosen handset.

1.9.1 INSTALLATION

Before the Cordless Phone Manager is installed, your computer must satisfy the following requirements:

- Windows 98, ME, NT 4.0, 2000 or XP
- 10 MB memory
- Super VGA monitor or better

How to install the Cordless Phone Manager

- 1 Put the installation DVD in your DVD-ROM drive and start the file "Setup.exe".
A wizard will guide you through the installation.
- 2 Click on "Next".
- 3 Acknowledge the license agreement by clicking on "OK".
- 4 Select the memory location with the help of the "Browse" button, and click on "Next".
- 5 Choose a program folder, and click on "Next" to start the installation.
- 6 The successful installation is indicated in the installation wizard.
Close the installation by clicking on "Finish".

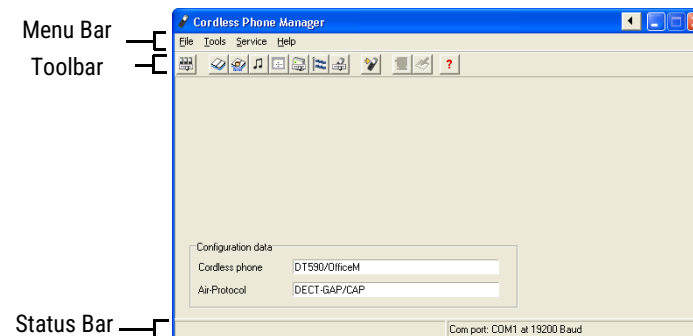
1.9.2 CONFIGURATION

In the Start menu under "Programs", select the option "Cordless Phone Manager". The program is started.

Access to the functions of the Cordless Phone Manager is restricted for the user. Only the administrator can use all the functions. The availability of the functions in the menu bar and toolbar also varies, depending on the selected handset type.



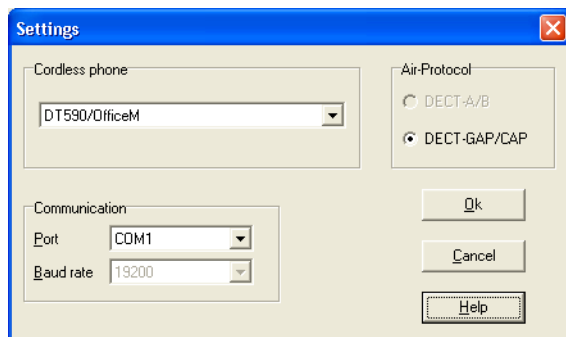
For a handset to be configurable with the help of the Cordless Phone Manager, the handset must be connected to the computer by a suitable interface cable.



Tool-bar	Menu Bar	Function
	File Settings	Settings (<i>1.9.2.1 Settings</i> , page 48)
	Tools Company phone book	Global Phonebook (<i>1.9.2.2 Company phone book</i> , page 48)
	Tools User phone book	Private Phonebook (<i>1.9.2.3 User phone book</i> , page 49)
	Tools Ringing melodies	Melodies (<i>1.9.2.4 Ringing melodies</i> , page 49)
	Tools Start-up screen	Start-up screen (<i>1.9.2.5 Start-up screen</i> , page 50)
	Tools PBX Settings	PBX Settings (<i>1.9.2.6 PBX Settings</i> , page 50)
	Tools Additional language	Additional language (<i>1.9.2.7 Additional Language</i> , page 51)
	Tools Configure SwyxPhone D300	Configuration of SwyxPhone D300, see <i>1.9.2.8 Configure SwyxPhone D300</i> , page 51
	Tools Software Download	Software Download (<i>1.9.2.9 Software download</i> , page 52)
	Help	Help

1.9.2.1 SETTINGS

In the "Settings" dialog you can specify the handset type, the radio protocol, the COM port and the Bps. Confirm your entries by clicking on "OK".



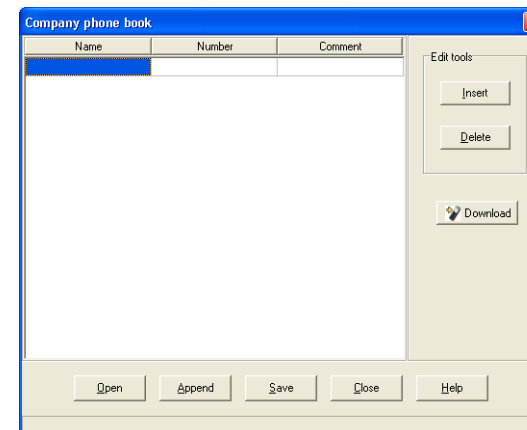
Function	Description
Cordless phone	Select the required handset type here. The ABC code is in the battery compartment of the handset.
Air Protocol	Select the radio protocol (DECT-A/B) or (DECT-GAP/CAP) here. If the selected handset can only be used with one radio protocol, this protocol is automatically selected.
Port	Select the communication port of the computer to the programming adapter here (COM1, COM2, COM3 or COM4).
Baud rate	Select the baud rate between the computer and the programming adapter here (between 4800 and 115200 bps).
Cancel	If you click on "Cancel", this dialog will be closed.
OK	If you click on "OK", the selection will be accepted and the dialog will be closed.
Help	If you click on "Help", the online help will be opened.



Note that if the baud rate has been set too high, it will be set back to the previous value. The maximum baud rate supported by most handsets is 38400 bps.

1.9.2.2 COMPANY PHONE BOOK

In the "Company phone book" dialog, you can manage entries in the Global Phonebook. The Global Phonebook is a central phonebook with numbers that are available to all users. The phonebook can be created directly i.e. within the dialog, but also externally with a text editor or a spreadsheet program, which stores the file in a text format. Every phonebook entry contains a name, a number and optionally a comment.

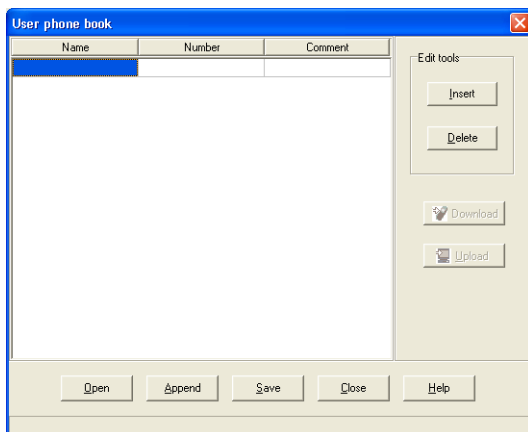


Function	Description
Name	Enter the name here. The field can be edited.
Number	Enter the number here. The field can be edited.
Comment	You can store a comment here. This field can be edited, but it is not transferred to the handset in the download.
Insert	If you click on "Insert", a new line is created above the selected line.
Delete	If you click on "Delete", the highlighted line will be deleted.
Download	If you click on "Download", the Global Phonebook is transferred to the handset.
Open	If you click on "Open", the dialog "Open phone book" appears for opening an externally stored phonebook.

Function	Description
Append	If you click on "Append", the dialog "Append phone book" appears for adding the data of an externally stored phonebook to the Global Phonebook displayed here.
Save	If you click on "Save", the entries you have made are stored.
Close	If you click on "Close", this dialog will be closed.
Help	If you click on "Help", the online help will be opened.

1.9.2.3 USER PHONE BOOK

In the "User phone book" dialog, you can manage entries in the Personal Phonebook. The Personal Phonebook holds your own personal numbers. You are the only person with access to this Phonebook. The phonebook can be created directly within the dialog, but also externally with a text editor or a spreadsheet program, which stores the file in a text format. Every phonebook entry contains a name, a number and optionally a comment.



Function	Description
Name	Enter the name here. The field can be edited.
Number	Enter the number here. The field can be edited.

Function	Description
Comment	You can store a comment here. This field can be edited, but it is not transferred to the handset in the download.
Insert	If you click on "Insert", a new line is created above the selected line.
Delete	If you click on "Delete", the highlighted line will be deleted.
Upload	If you click on "Upload", the Personal Phonebook is retrieved from the handset.
Download	If you click on "Download", the Personal Phonebook is transferred to the handset.
Open	If you click on "Open", the dialog "Open phone book" appears for opening an externally stored phonebook.
Append	If you click on "Append", the dialog "Append phone book" appears for adding the data of an externally stored phonebook to the Personal Phonebook displayed here.
Save	If you click on "Save", the entries you have made are stored.
Close	If you click on "Close", this dialog will be closed.
Help	If you click on "Help", the online help will be opened.

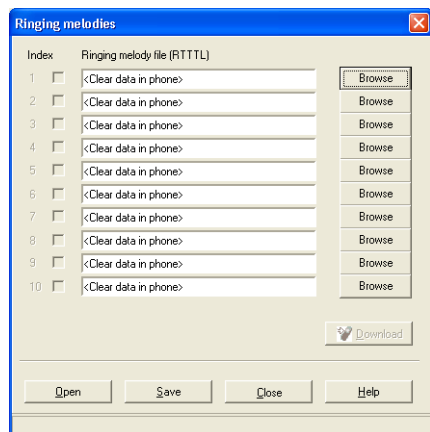
1.9.2.4 RINGING MELODIES

This function is relevant for the SwyxPhone D300 handset. The SwyxPhone D300 can play user-defined ringtone melodies. These melodies, which are in RTTTL format, can be downloaded with the Cordless Phone Manager.

The SwyxPhone D300 must be activated during configuration.



The size of a melody (or all melodies) is limited according to the available memory capacity of the handset. If the maximum size has been exceeded, the melody is truncated.

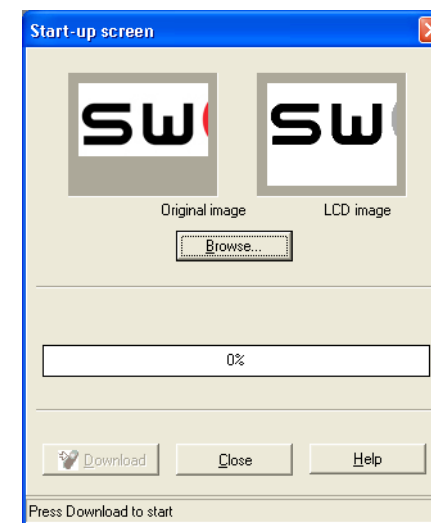


Functions	Description
Open	If you click on "Open", you can open an INI file that already contains a set of stored melodies.
Save	If you click on "Save", you can save the melodies that are currently selected in this dialog, in a set.
Index	The index specifies whether a melody should be downloaded to the handset (check mark set) or removed from it (no check mark).
Browse	Click on "Browse" to choose the RTTTL melody file that should be downloaded to the handset.
Download	If you click on "Download", the selected melodies are loaded on to the handset.
Close	If you click on "Close", this dialog will be closed.
Help	If you click on "Help", the online help will be opened.

1.9.2.5 START-UP SCREEN

This feature applies to the SwyxPhone D300 handset. SwyxPhone D300 may contain a new startup screen. To change the start-up screen, you need an image file in BMP format.

The SwyxPhone D300 must be activated during configuration.

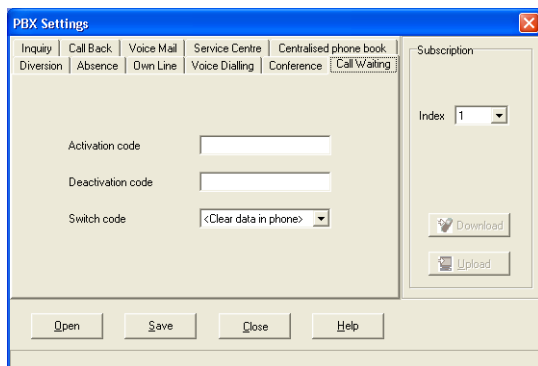


Function	Description
Original Image	The left area shows the original view of the image to be downloaded.
LCD image	The right area shows the grayscale image as it will be displayed on the start-up screen.
Browse	Click on "Browse" to choose the BMP file that should be downloaded.
Download	If you click on "Download", the image file will be downloaded. After the click, the handset is automatically switched off and an information dialog appears. It is absolutely essential that you follow the instructions in this dialog.
Close	If you click on "Close", this dialog will be closed.
Help	If you click on "Help", the online help will be opened.

1.9.2.6 PBX SETTINGS

The configuration of the function "PBX Settings" relates to the Swyx-Phone D300 handset . A SwyxPhone D300 has various menu items which can be configured in different ways according to the type of the connected PBX.

The SwyxPhone D300 must be activated during configuration.

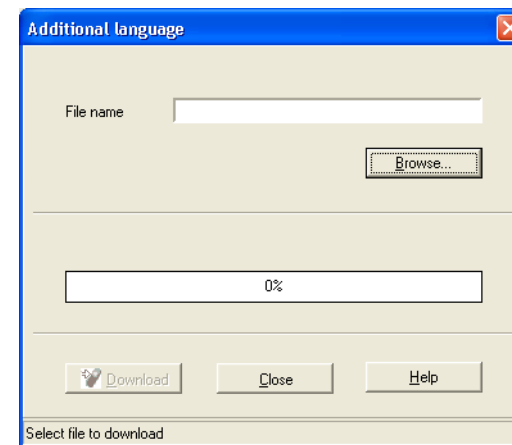


Function	Description
Tabs	The various tabs categorize the PBX settings.
Open	If you click on "Open", you can open an INI file that contains a predefined configuration of a specific PBX type.
Save	If you click on "Save", the settings that have currently been selected in this dialog are saved in an INI file.
Index	The handset registration index is used for specifying the handset to which the PBX settings apply.
Download	If you click on "Download", the PBX settings are loaded on to the handset.
Upload	If you click on "Upload", the PBX settings are loaded from the handset to the Cordless Phone Manager.
Close	If you click on "Close", this dialog will be closed.
Help	If you click on "Help", the online help will be opened.

1.9.2.7 ADDITIONAL LANGUAGE

This function is relevant for the SwyxPhone D300 handset . In case the SwyxPhone D300 does not support the language you want, you can add a further language.

The SwyxPhone D300 must be activated during configuration.

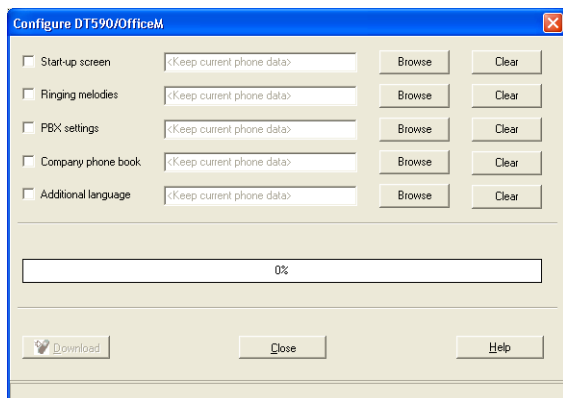


Functions	Description
File name	Represents the name of the file with the additional language.
Browse	Click on "Browse" to choose the language file that should be downloaded.
Download	If you click on "Download", the additional language will be downloaded. After the click, the handset is automatically switched off and an information dialog appears. It is absolutely essential that you follow the instructions in this dialog.
Close	If you click on "Close", this dialog will be closed.
Help	If you click on "Help", the online help will be opened.

1.9.2.8 CONFIGURE SWYXPHONE D300

Instead of separate downloads for start-up screen, melodies, PBX settings, global phonebooks and additional language, a simultaneous download of all these items to the SwyxPhone D300 can take place here.

The SwyxPhone D300 must be activated during configuration.

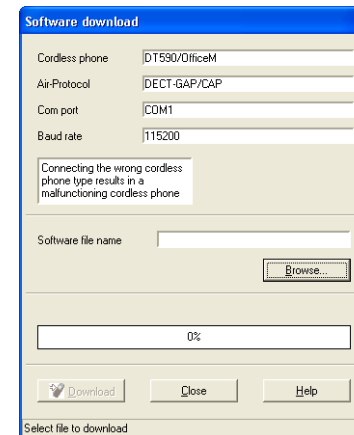


Functions	Description
Check boxes	By setting a check mark in the relevant check box, you specify which settings should be loaded on to the SwyxPhone D300.
Clear	If you click on "Clear", the settings present in the SwyxPhone D300 will be deleted in the download. For example, if the SwyxPhone D300 has a start-up screen and this is to be removed, click on clear after "Start-up screen". During the download, the start-up screen will be removed.
Download	If you click on "Download", this initiates the download of the selected items.
Close	If you click on "Close", this dialog will be closed.
Help	If you click on "Help", the online help will be opened.

1.9.2.9 SOFTWARE DOWNLOAD

This configuration relates to the handsets SwyxPhone D200 and SwyxPhone D300. New software is downloaded on to the selected handset with the dialog "Software download".

SwyxPhone D200 and SwyxPhone D300 must be activated during configuration.



Functions	Description
Cordless phone	Shows the selected handset.
Air Protocol	Shows the selected radio protocol.
Com port	Shows the communication port of the computer to the programming adapter.
Baud rate	Shows the transmission rate between the computer and the programming adapter.
Browse	Click on "Browse" to open the dialog "Open software file" for the selection of the software file.
Download	If you click on "Download ", the download will be started. Before this, the handset must have been connected via the interface cable and switched on.
Close	If you click on "Close", this dialog will be closed.
Help	If you click on "Help", the online help will be opened.



Never connect a handset type other than the one shown in this dialog. Malfunctions can occur when an incorrect handset type is connected.

1.10 UPDATE OF THE SWYXDECT 800

You can perform various updates:

- Firmware of the SwyxDECT 800
- Configuration of the SwyxDECT 800
- Bootloader of the SwyxDECT 800

This is how you update the SwyxDECT 800

- 1 Open the web interface of the SwyxDECT 800.
- 2 Authenticate yourself as administrator (name and password).
- 3 Switch to the "Update" page.
- 4 Choose what you want to update:
 - Configuration (Config)
A previously saved configuration can be loaded and activated here.
For how to save the configuration of a SwyxDECT 800, please refer to *1.6.5.11 Backup*, page 26.
 - Software of the station (Firmware)



The upload should on no account be interrupted, as otherwise the firmware in the terminal will be destroyed. Do not perform a restart before the upload has been completely executed! If for some reason an interruption does occur, you must upload the firmware again. Use the program "gwload.exe" for this.

See also *Update of the firmware with Gwload*, page 53.

- Startup file (Boot)
You can update the startup file here.
- 5 Enter the URL for the relevant update file.
 - 6 Choose "Upload" to start the update process.
 - 7 Then do a reset or idle reset. See *1.6.5.14 Reset*, page 28.

Update of the firmware with Gwload

How to load the firmware using the program "Gwload"

- 1 Download program 'Gwload'.
- 2 Set the base station into TFTP mode, by pressing the reset button on the back of the base station for about 3 seconds (*Reset using the reset button*, page 29).
- 3 Call the command line.
- 4 To update the base station with the new firmware, execute the following command at the location of the gwload.exe file:

```
gwload /setip /i <ipadress> /gwtype 1201 /prot <..path/  
firmwarefilename> /go
```
- 5 If more than one base station should be present in TFTP mode, select the base station to be updated and press Enter.